

# Giblor's

italian work/life specialist



**2022 COLLECTION**

CHEF STYLE

# Chef Style

Un mondo fatto di passione per il gusto,  
in tutte le sue declinazioni.  
Professionisti che vivono la loro professione come  
un confine che si sposta ogni giorno più avanti.

*A world of passion for taste,  
in all its declinations.  
Professionals living their profession as a moving  
border every day later.*

La collezione **Chef Style GIBLOR'S** nasce  
per te che non ti accontenti mai, per te che  
investi energie e creatività nel creare opere  
d'arte che si rivelano nel palato.

*The **Chef Style GIBLOR'S** collection is  
born for you who are never satisfied, for you  
who invest energy and creativity in creating  
works of art that are revealed in the palate.*

Capi comodi e dal design unico per chef e  
brigata di cucina: dettagli ricercati e finiture  
curate nei minimi dettagli, realizzati con tessuti  
altamente tecnologici e di primissima qualità.

*Comfortable clothes with a unique design for  
chefs and kitchen brigade: refined details and  
finishes attention to detail, made with fabrics  
highly technological and of the highest quality.*

Elementi che anticipano e superano  
le aspettative di chi vive alla ricerca  
dell'eccellenza.

*Elements that anticipate and surpass the  
expectations of those who live in search of  
excellence.*

**Giblor's**  
italian work/life specialist

# Be yourself

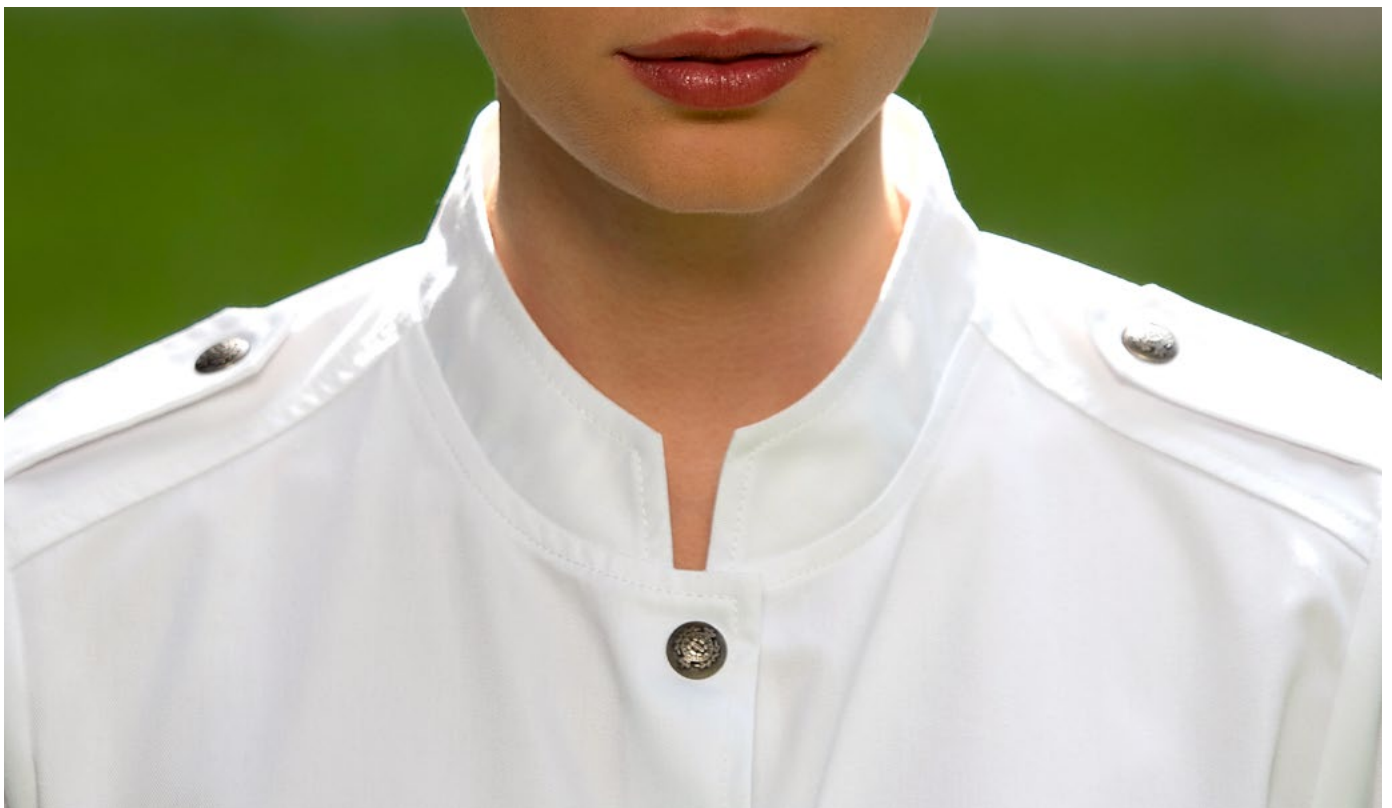
PERSONALITÀ,  
PROFESSIONALITÀ,  
**PASSIONE.**

Sono ingredienti alla base di ogni successo. Diventano eccellenza se arricchiti con cura per i dettagli e capacità di armonizzare sapientemente tradizione e innovazione.

Noi di GIBLOR'S lo sappiamo bene.

È per questo che il nostro impegno quotidiano punta a creare capi in grado di esprimere al massimo la tua unicità. Perché scegliere tra comfort e stile se puoi avere tutto? Vogliamo darti la possibilità di definirti anche attraverso ciò che indossi. Noi saremo al tuo fianco ogni giorno, per aiutarti a lavorare al meglio.

A modo tuo.



# wear GIBLOR'S

PERSONALITY,  
PROFESSIONALISM,  
**PASSION.**

*They are the basic ingredients of every success. They become excellence if enriched with care for details and ability to harmoniously harmonize tradition and innovation.*

*We at GIBLOR'S know that well.*

*This is why our daily commitment aims at create garments that can express your uniqueness to the fullest. Why choose between comfort and style if you can have it all? We want to give you the opportunity to define yourself also through what you wear. We will be by your side every day, for help you work at your best.*

*Your way.*

## chef style

Giacche bottoni a pressione in tessuto  
*Fabric covered press studs jackets*

# MAX

### Dettagli / Details

- Bottoni a pressione in tessuto
- Taschino sul petto
- Taschino portapenne sulla manica
- 2 spacchetti dietro
- Inserti in rete

- *Fabric covered press studs*
- *Breast pocket*
- *Pen pocket on sleeve*
- *2 side vents*
- *Network fabric panels*

### Taglie / Sizes

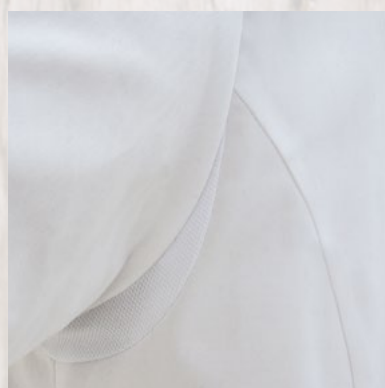
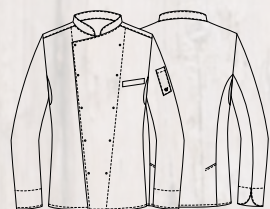
S ÷ 4XL Slim Fit

### Art. 17P08G960

00 Bianco / White

### Tessuto / Fabric

100% cotone  
100% cotton  
170 g / m<sup>2</sup>



**Massimo Bottura**  
Giblor's Ambassador dal 2007  
Chef patron di Osteria Francescana,  
nominato due volte  
"Miglior Ristorante al mondo"  
della classifica «The World's 50 Best»



 **Tencel™**  
Feels so right

## chef style

Giacche bottone a pressione  
Press studs fastening jackets

# VINCENT

### Dettagli / Details

- Bottoni a pressione coperti internamente
  - Bottoni gemelli
  - Taschino sul petto
  - Taschino portapenne sulla manica
  - Inserti in rete
  - 2 spacchetti dietro
- 
- Press studs covered internally
  - Cuff links
  - Breast pocket
  - Pen pocket on sleeve
  - Network fabric panels
  - 2 side vents

### Taglie / Sizes

S ÷ 4XL Slim Fit

### Art. 20P08G169

00 Bianco / White  
000 Nero / Black

### Tessuto / Fabric

50% lyocell 50% poliestere  
50% lyocell 50% polyester  
180 g / m<sup>2</sup>



Art. 20P08G169  
00 Bianco / White

## chef style

Giacche bottone cucito a mano  
Hand made buttons jackets

# EXECUTIVE CHEF

### Dettagli / Details

- Bottoni cuciti a mano
- Taschino sul petto
- Taschino portapenne sulla manica
- 2 spacchetti dietro
- Inserti in rete

- Hand made buttons
- Breast pocket
- Pen pocket on sleeve
- 2 side vents
- Network fabric panels

### Taglie / Sizes

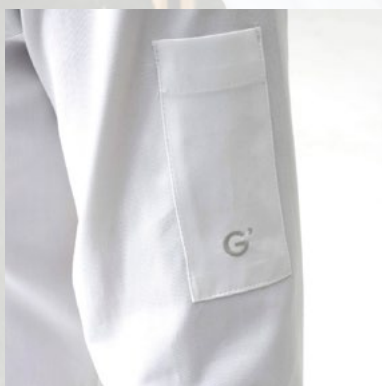
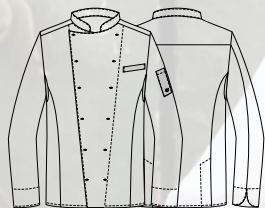
S ÷ 5XL Slim Fit

### Art. 18P08G050

00 Bianco / White

### Tessuto / Fabric

100% cotone  
100% cotton  
170 g / m<sup>2</sup>



Brigata di cucina - Osteria Francescana, Modena

**chef style**

Giacche bottone cucito a mano  
Hand made buttons jackets

## DIANA

### Dettagli / Details

- Bottoni cuciti a mano
- Taschino sul petto
- Taschino portapenne sulla manica
- 2 spacchetti dietro
- Inserti in rete
- Hand made buttons
- Breast pocket
- Pen pocket on sleeve
- 2 side vents
- Network fabric panels

### Taglie / Sizes

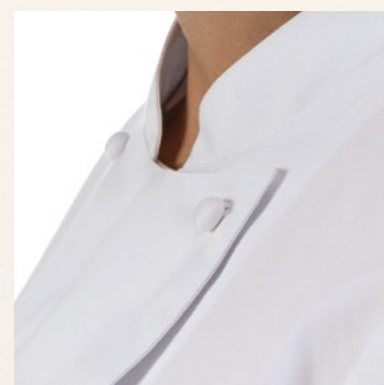
XS ÷ 4XL Slim Fit

### Art. 19P08G105

00 Bianco / White

### Tessuto / Fabric

100% cotone  
100% cotton  
170 g / m<sup>2</sup>



Brigata di cucina - Osteria Francescana, Modena

## chef style

Giacche bottoni a pressione  
Press studs fastening jackets

# PAUL

### Dettagli / Details

- Bottoni a pressione
- Taschino sul petto
- Taschino portapenne sulla manica
- 2 spacchetti dietro

- Press studs
- Breast pocket
- Pen pocket on sleeve
- 2 side vents

### Taglie / Sizes

S ÷ 4XL Slim Fit

### Art. 20P08G165

00 Bianco / White  
000 Nero / Black

### Tessuto / Fabric

62% cotone 35% poliestere 3% elasthan  
62% cotton 35% polyester 3% elasthan  
180 g / m<sup>2</sup>



Art. 20P08G165  
00 Bianco / White



**chef style**

Giacche bottone a pressione  
Press studs fastening jackets

## DENISE

### Dettagli / Details

- Bottoni a pressione
- Taschino sul petto
- Taschino portapenne sulla manica
- 2 spacchetti dietro

- Press studs
- Breast pocket on sleeve
- Pen pocket
- 2 side vents

### Taglie / Sizes

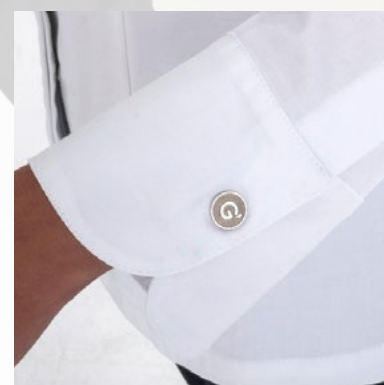
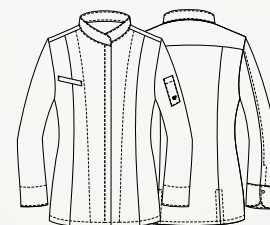
XS ÷ XXXL Slim Fit

### Art. 20P08G166

00 Bianco / White  
000 Nero / Black

### Tessuto / Fabric

62% cotone 35% poliestere 3% elasthan  
62% cotton 35% polyester 3% elasthan  
180 g / m<sup>2</sup>



Art. 20P08G166  
000 Nero / Black

## chef style

Giacche bottone a pressione  
Press studs fastening jackets

# SAMUEL

### Dettagli / Details

- Bottoni a pressione
- Taschino portapenne sulla manica
- 2 spacchetti dietro

- Press studs
- Pen pocket on sleeve
- 2 side vents

### Taglie / Sizes

S ÷ 4XL Slim Fit

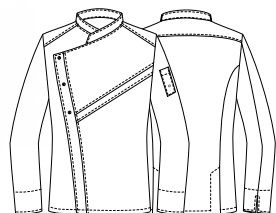


### Art. 22P08G298

00 Bianco / White  
019 Grigio chiaro / Light grey  
000 Nero / Black

### Tessuto / Fabric

50% lyocell 50% poliestere  
50% lyocell 50% polyester  
180 g / m<sup>2</sup>



Art. 22P08G298  
00 Bianco / White

## chef style

Giacche bottone a pressione  
Press studs fastening jackets

# ROGER

### Dettagli / Details

- Bottoni a pressione
- Taschino sul petto
- Inserti in rete
- 2 spacchetti nel fianco

- Press studs
- Breast pocket
- Network fabric panels
- 2 side vents

### Taglie / Sizes

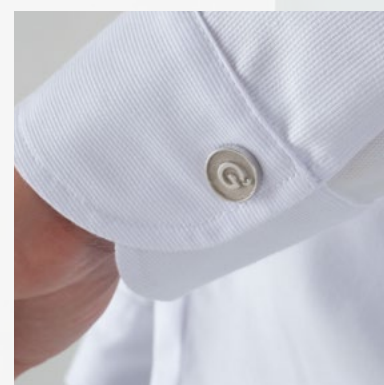
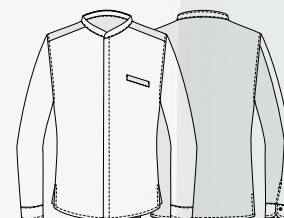
S ÷ 4XL Slim Fit

### Art. 22P08G297

000 Nero / Black  
00 Bianco / White

### Tessuto / Fabric

52% poliestere 48% cotone  
52% polyester 48% cotton  
171 g / m<sup>2</sup>



Art. 22P08G297  
000 Nero / Black

## chef style

Giacche bottone a pressione  
*Press studs fastening jackets*

# KEIRA

### Dettagli / Details

- Bottoni a pressione
- Taschino portapenne sulla manica
- Inserti in rete
- 2 spacchetti dietro

- *Press studs*
- *Pen pocket on sleeve*
- *Network fabric panels*
- *2 side vents*

### Taglie / Sizes

XS ÷ XXXL Slim Fit

### Art. 22P08G301

00 Bianco / *White*

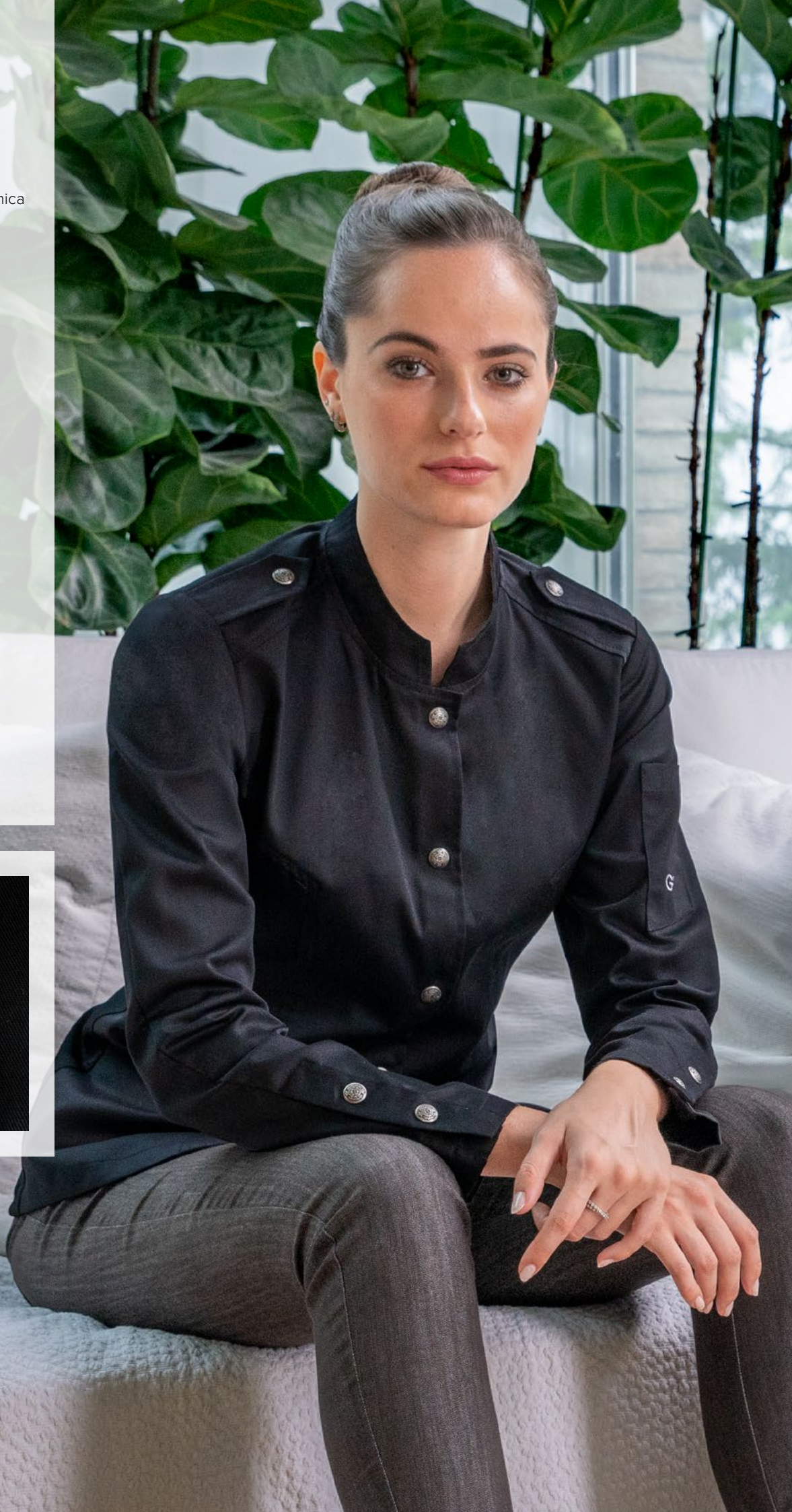
000 Nero / *Black*

### Tessuto / Fabric

65% poliestere 35% cotone

65% polyester 35% cotton

200 g / m<sup>2</sup>



## chef style

Giacche bottone a pressione  
Press studs jackets

# KIRK

### Dettagli / Details

- Bottoni a pressione
- Taschino sul petto
- Taschino portapenne sulla manica
- Inserti in rete
- Press studs
- Breast pocket
- Pen pocket on sleeve
- Network fabric panels

### Taglie / Sizes

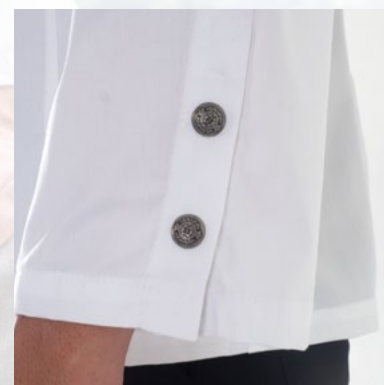
S ÷ 4XL Slim Fit

### Art. 22P08G300

000 Nero / Black  
00 Bianco / White

### Tessuto / Fabric

65% poliestere 35% cotone  
65% polyester 35% cotton  
200 g / m<sup>2</sup>



## chef style

Giacche bottone a pressione  
Press studs fastening jackets

# GOOSE

### Dettagli / Details

- Bottoni a pressione
- Taschino sul petto
- Taschino portapenne sulla manica
- Inserti in rete
- 2 spacchetti dietro
- Inserti in alcantara

- Press studs
- Breast pocket
- Pen pocket on sleeve
- Network fabric panels
- 2 side vents
- Alcantara inserts

### Taglie / Sizes

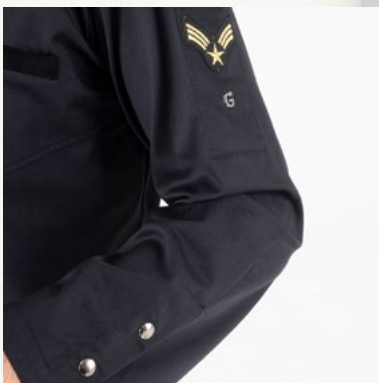
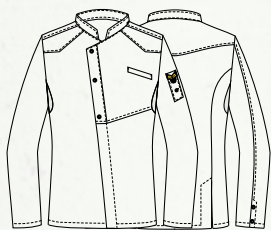
S ÷ 4XL Slim Fit

### Art. 20P08G170

102 Verde militare / Military green  
000 Nero / Black

### Tessuto / Fabric

65% poliestere 35% cotone  
65% polyester 35% cotton  
200 g / m<sup>2</sup>



### Art. 20P08G170

102 Verde militare / Military green

## chef style

Giacche bottone a pressione  
Press studs fastening jackets

# ERIC

### Dettagli / Details

- Bottoni a pressione
- Taschino sul petto
- Taschino portapenne sulla manica
- 2 spacchetti dietro

- Press studs
- Breast pocket
- Pen pocket on sleeve
- 2 side vents

### Taglie / Sizes

S ÷ 4XL Slim Fit

### Art. 22P08G295

J004 Jeans blu / Jeans blue

### Tessuto / Fabric

62% cotone 35% poliestere 3% elasthan  
62% cotone 35% polyester 3% elasthan  
180 g / m<sup>2</sup>



Art. 22P08G295  
J004 Jeans blu / Jeans blue

## chef style

Giacche bottone a pressione  
Press studs fastening jackets

# PATRICK

### Dettagli / Details

- Bottoni a pressione
- Taschino sul petto
- Taschino portapenne sulla manica
- Rete sulla schiena
- Rete nel sottomanica

- Press studs
- Breast pocket
- Pen pocket on sleeve
- Network fabric on the back
- Network fabric on the undersleeves

### Taglie / Sizes

S ÷ 4XL Slim Fit

### Art. 20P08G189

000 Nero / Black

### Tessuto / Fabric

65% poliestere 35% cotone  
65% polyester 35% cotton  
200 g / m<sup>2</sup>

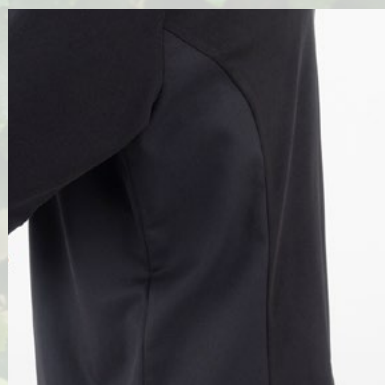
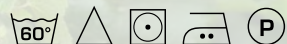


### Art. 20P08G174

00 Bianco / White

### Tessuto / Fabric

100% cotone  
100% cotton  
185 g / m<sup>2</sup>



Art. 20P08G189  
000 Nero / Black



## chef style

Giacche bottone a pressione  
Press studs fastening jackets

# ROSE

### Dettagli / Details

- Bottoni a pressione
- Taschino sul petto
- Taschino portapenne sulla manica
- Rete sulla schiena
- Rete nel sottomanica
  
- Press studs
- Breast pocket
- Pen pocket on sleeve
- Network fabric on the back
- Network fabric on the undersleeves

### Taglie / Sizes

XS ÷ XXXL Slim Fit

### Art. 20P08G175

00 Bianco / White

### Tessuto / Fabric

100% cotone  
100% cotton  
185 g / m<sup>2</sup>



### Art. 20P08G190

000 Nero / Black

### Tessuto / Fabric

65% poliestere 35% cotone  
65% polyester 35% cotton  
200 g / m<sup>2</sup>



Art. 20P08G175  
00 Bianco / White

## chef style

Giacche bottone a pressione  
Press studs fastening jackets

# ZAC

### Dettagli / Details

- Bottoni a pressione
- Taschino sul petto
- Taschino portapenne sulla manica
- Press studs
- Breast pocket
- Pen pocket on sleeve

### Taglie / Sizes

S ÷ 4XL Slim Fit

### Art. 20P08G173

000 Nero / Black  
016 Tortora / Taupe

### Tessuto / Fabric

65% poliestere 35% cotone  
65% polyester 35% cotton  
200 g / m<sup>2</sup>

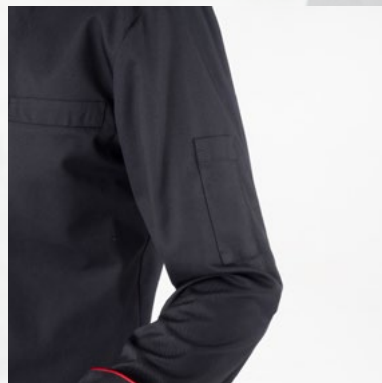


### Art. 20P08G173

005 Rosso / Red

### Tessuto / Fabric

65% poliestere 35% cotone  
65% polyester 35% cotton  
200 g / m<sup>2</sup>



Art. 20P08G173  
000 Nero / Black

## chef style

Giacche bottone a pressione  
Press studs fastening jackets

# EMY

### Dettagli / Details

- Bottoni a pressione
- Taschino sul petto
- Taschino portapenne sulla manica

- Press studs
- Breast pocket
- Pen pocket on sleeve

### Taglie / Sizes

XS ÷ XXXL Slim Fit

### Art. 20P08G168

000 Nero / Black  
016 Tortora / Taupe

### Tessuto / Fabric

65% poliestere 35% cotone  
65% polyester 35% cotton  
200 g / m<sup>2</sup>



### Art. 20P08G168

005 Rosso / Red

### Tessuto / Fabric

65% poliestere 35% cotone  
65% polyester 35% cotton  
200 g / m<sup>2</sup>



Art. 20P08G168  
000 Nero / Black

## chef style

Giacche bottoni a pressione  
*Press studs jackets*

# RAUL

### Dettagli / Details

- Bottoni a pressione
- Taschino sul petto
- Taschino portapenne sulla manica
- Rete sulla schiena

- *Press studs*
- *Breast pocket*
- *Pen pocket on sleeve*
- *Network fabric on the back*

### Art. 22P08G322

00 Bianco / *White*

### Taglie / Sizes

S ÷ 4XL Slim Fit

### Tessuto / Fabric

100% cotone  
*100% cotton*  
185 g / m<sup>2</sup>

### Art. 22P08G323

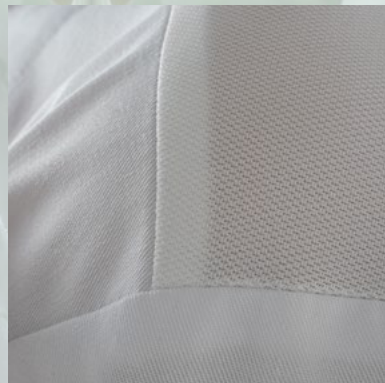
006 Bordeaux / *Burgundy*  
000 Nero / *Black*  
016 Tortora / *Taupe*  
004 Blu / *Blue*  
322 Marrone / *Brown*  
019 Grigio chiaro / *Light grey*  
102 Verde militare / *Military green*

### Taglie / Sizes

S ÷ 4XL Slim Fit

### Tessuto / Fabric

65% poliestere 35% cotone  
*65% polyester 35% cotton*  
200 g / m<sup>2</sup>



Art. 22P08G323  
019 Grigio / *Grey*



**Art. 22P08G322**  
00 Bianco / White



**Art. 22P08G323**  
006 Bordeaux / Burgundy



**Art. 22P08G323**  
000 Nero / Black



**Art. 22P08G323**  
016 Tortora / Taupe



**Art. 22P08G323**  
004 Blu / Blue



**Art. 22P08G323**  
322 Marrone / Brown



**Art. 22P08G323**  
019 Grigio chiaro / Light grey



**Art. 22P08G323**  
102 Verde militare / Military green

## chef style

Giacche bottoni a pressione

Press studs jackets

# THIAGO

### Dettagli / Details

- Bottoni a pressione
- Taschino sul petto
- Rete sulla schiena

- Press studs
- Breast pocket
- Network fabric on the back

### Art. 22P08G640

016 Tortora / Taupe  
004 Blu / Blue  
006 Bordeaux / Burgundy  
322 Marrone / Brown  
102 Verde militare / Military green

### Taglie / Sizes

S ÷ 4XL Slim Fit

### Tessuto / Fabric

65% poliestere 35% cotone  
65% polyester 35% cotton  
200 g / m<sup>2</sup>

### Art. 19P08G640

019 Grigio chiaro / Light grey

### Taglie / Sizes

S ÷ 4XL Slim Fit

### Tessuto / Fabric

65% poliestere 35% cotone  
65% polyester 35% cotton  
200 g / m<sup>2</sup>



### Art. 15P08G640

000 Nero / Black

### Taglie / Sizes

S ÷ 5XL Slim Fit

### Tessuto / Fabric

65% poliestere 35% cotone  
65% polyester 35% cotton  
200 g / m<sup>2</sup>

### Art. 15P08G641

00 Bianco / White

### Taglie / Sizes

S ÷ 5XL Slim Fit

### Tessuto / Fabric

100% cotone  
100% cotton  
185 g / m<sup>2</sup>



Art. 22P08G640  
004 Blu / Blue



**Art. 22P08G640**  
016 Tortora / Taupe



**Art. 22P08G640**  
006 Bordeaux / Burgundy



**Art. 22P08G640**  
322 Marrone / Brown



**Art. 22P08G640**  
004 Blu / Blue



**Art. 22P08G640**  
102 Verde militare / Military green



**Art. 19P08G640**  
019 Grigio chiaro / Light grey



**Art. 15P08G640**  
000 Nero / Black



**Art. 15P08G641**  
00 Bianco / White



## chef style

Giacche bottoni a pressione  
Press studs jackets

# MEGAN

### Dettagli / Details

- Bottoni a pressione
- Taschino sul petto
- Inserti in rete

- Press studs
- Breast pocket
- Network fabric panels

### Taglie / Sizes

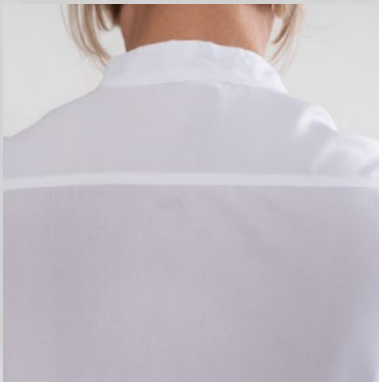
XS ÷ XXXL Slim Fit

### Art. 20P02K218

000 Nero / Black  
00 Bianco / White

### Tessuto / Fabric

100% poliestere  
100% polyester  
86 g / m<sup>2</sup>



BIONIC  
FINISH<sup>®</sup> C<sub>6</sub>

ULTRA  
LIGHT  
86 GR.



Art. 20P02K218  
000 Nero / Black



**chef style**

Giacche bottone a pressione  
Press studs fastening jackets

## HARRY

### Dettagli / Details

- Bottoni a pressione
- Taschino sul petto
- Inserti in rete

- Press studs

- Breast pocket

- Network fabric panels

### Taglie / Sizes

S ÷ 4XL Slim Fit

### Art. 20P02K217

00 Bianco / White

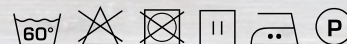
000 Nero / Black

### Tessuto / Fabric

100% poliestere

100% polyester

86 g / m<sup>2</sup>



BIONIC  
FINISH<sup>°C</sup>

ULTRA  
LIGHT  
86 GR.

Art. 20P02K217  
00 Bianco / White

## chef style

Giacche bottoni a pressione  
Press studs jackets

# LAPO

### Dettagli / Details

- Bottoni a pressione
- Taschino sul petto
- Inserti in rete

- Press studs
- Breast pocket
- Network fabric panels

### Art. 19P08G045

119 Grigio / Grey

### Taglie / Sizes

S ÷ 4XL Slim Fit

### Tessuto 1 / Fabric 1

100% poliestere  
100% polyester  
160 g / m<sup>2</sup>

### Tessuto 2 / Fabric 2

50% cotone 50% poliestere  
50% cotton 50% poliestere  
180 g / m<sup>2</sup>



### Art. 18P08G045

000 Nero / Black  
00 Bianco / White

### Taglie / Sizes

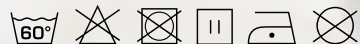
S ÷ 4XL Slim Fit

### Tessuto 1 / Fabric 1

100% poliestere  
100% polyester  
160 g / m<sup>2</sup>

### Tessuto 2 / Fabric 2

97% cotone 3% elasthan  
97% cotton 3% elasthan  
185 g / m<sup>2</sup>



 Fresh &  
Stretch



Art. 18P08G045  
00 Bianco / White

## chef style

Giacche bottone a pressione  
Press studs jackets

# LAPO

### Dettagli / Details

- Bottoni a pressione
- Taschino sul petto
- Inserti in rete

- Press studs
- Breast pocket
- Network fabric panels

### Taglie / Sizes

S ÷ 4XL Slim Fit

### Art. 21P08G251

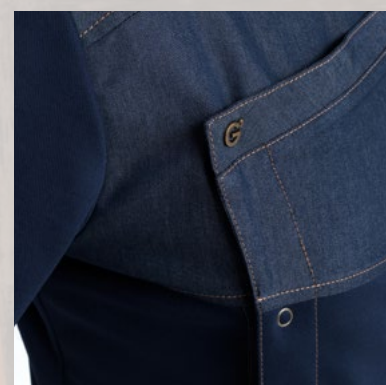
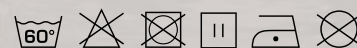
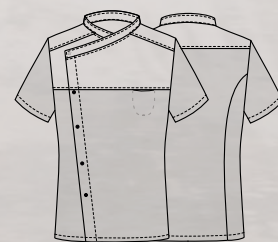
J004 Jeans blu  
J004 Jeans blu

### Tessuto 1 / Fabric 1

100% poliestere  
100% polyester  
160 g / m<sup>2</sup>

### Tessuto 2 / Fabric 2

70% viscosa 27% poliestere 3% elasthan  
70% viscose 27% polyester 3% elastane  
200 g / m<sup>2</sup>



Fresh &  
Stretch

COMFORT

## chef style

Giacche bottone a pressione  
Press studs jackets

# SYLVESTER

### Dettagli / Details

- Bottoni a pressione
- Taschino sul petto
- Inserti in rete
- 2 spacchetti dietro

- Press studs
- Breast pocket
- Network fabric panels
- 2 side vents

### Taglie / Sizes

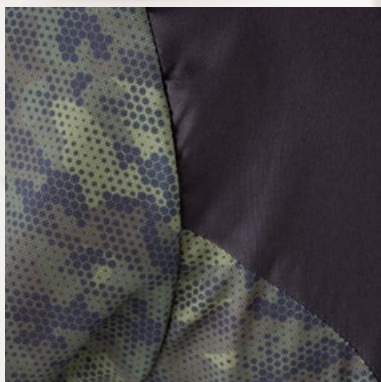
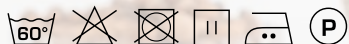
S ÷ 4XL Slim Fit

### Art. 22P08G299

000 Nero / Black

### Tessuto / Fabric

100% poliestere  
100% polyester  
86 g / m<sup>2</sup>



BIONIC  
FINISH<sup>®</sup> C<sub>6</sub>

ULTRA  
LIGHT





**Art. 19P08P109**  
J000 Jeans nero / Black jeans  
210 g / m<sup>2</sup>



**Art. 19P08P109**  
J019 Jeans Grigio / Grey Jeans  
210 g / m<sup>2</sup>



**Art. 19P08P110**  
S119 Grigio / Grey  
172 g / m<sup>2</sup>



**Art. 22P08P654**  
J004 Jeans blu / Blue jeans  
180 g / m<sup>2</sup>



**SCOPRI LA SELEZIONE COMPLETA DI PANTALONI SU GIBLORS.COM**  
**DISCOVER THE COMPLETE SELECTION OF TROUSERS ON GIBLORS.COM**



**Art. 20P08P110**  
S322 Scozz. marrone / Scottish brown  
175 g / m<sup>2</sup>



**Art. 20P08P179**  
000 Nero / Black  
180 g / m<sup>2</sup>



**Art. 19P08P20**  
R000 Nero / Black  
140 g / m<sup>2</sup>



**Art. 19P08P20**  
R119 Grigio / Grey  
140 g / m<sup>2</sup>





**Art. 22P01H313**  
000 Nero / Black

65% poliestere 35% cotone  
65% polyester 35% cotton  
200 g / m<sup>2</sup>



**Art. 22P01H313**  
019 Grigio chiaro / Light Grey

65% poliestere 35% cotone  
65% polyester 35% cotton  
200 g / m<sup>2</sup>



**Art. 22P01H313**  
102 Verde militare / Military green

65% poliestere 35% cotone  
65% polyester 35% cotton  
200 g / m<sup>2</sup>



**SCOPRI LA SELEZIONE COMPLETA DI GREMBIULI SU GIBLORS.COM**  
**DISCOVER THE COMPLETE SELECTION OF APRONS ON GIBLORS.COM**



**Art. 22P01H313**  
016 Tortora / Taupe

65% poliestere 35% cotone  
65% polyester 35% cotton  
200 g / m<sup>2</sup>



**Art. 22P01H313**  
322 Marrone / Brown

65% poliestere 35% cotone  
65% polyester 35% cotton  
200 g / m<sup>2</sup>



**Art. 22P01H313**  
006 Bordeaux / Burgundy

65% poliestere 35% cotone  
65% polyester 35% cotton  
200 g / m<sup>2</sup>



**Art. 22P01H313**  
004 Blu / Blue

65% poliestere 35% cotone  
65% polyester 35% cotton  
200 g / m<sup>2</sup>



# Giblor's

italian work/life specialist



## COLLEZIONE 2022

Scarica il catalogo completo su [giblors.com](https://giblors.com)



# Giblor's

italian work*life* specialist



Viale dei Trasporti, 6/A - 6/B  
41012 CARPI (MO) - Italy  
Tel. +39.059.654.602 Fax + 39.059.654.634  
[www.giblors.com](http://www.giblors.com) [info@giblors.com](mailto:info@giblors.com)