

Giblor's

italian work/life specialist



2022 COLLECTION

ALBERGHIERO E CAMICIE / HO.RE.CA. & SHIRTS

& Ho.Re.Ca. SERVICES

Il lavoro con il pubblico è fatto di sollecitudine,
dedizione e piccole attenzioni.
Si realizza appieno nel delicato equilibrio tra
dettagli classici e gradite sorprese.

*Working with the public is made of solicitude,
dedication and small attentions. It is fully realized
in the delicate balance between classic details
and pleasant surprises.*

Esattamente ciò che la linea **Giblor's**
Ho.Re.Ca & Services offre a
te, che ti dedichi ad offrire servizi capaci di
accendere il sorriso sul volto di ogni cliente.
Anche il più esigente.

*Exactly what the **Giblor's** line **Ho.Re.Ca**
& Services offers a you, dedicated to
offering services capable of light up the smile on
every customer's face.
Even the most demanding.*

Capi eleganti e funzionali, con una vestibilità
perfetta e con la massima coordinabilità:
abbiamo creato per te una collezione ampia
e varia, che spazia da pezzi senza tempo alle
ultime novità del design.

*Elegant and functional garments, with a perfect
fit and with maximum coordination: we have
created an extensive collection for you and
varied, ranging from timeless pieces to
latest design news.*

Il mix perfetto tra impegno e stile.

The perfect mix between commitment and style.

Giblor's
italian work/life specialist

Be yourself

PERSONALITÀ,
PROFESSIONALITÀ,
PASSIONE.

Sono ingredienti alla base di ogni successo. Diventano eccellenza se arricchiti con cura per i dettagli e capacità di armonizzare sapientemente tradizione e innovazione.

Noi di Giblor's lo sappiamo bene.

È per questo che il nostro impegno quotidiano punta a creare capi in grado di esprimere al massimo la tua unicità. Perché scegliere tra comfort e stile se puoi avere tutto? Vogliamo darti la possibilità di definirti anche attraverso ciò che indossi. Noi saremo al tuo fianco ogni giorno, per aiutarti a lavorare al meglio.

A modo tuo.



wear Giblor's

PERSONALITY,
PROFESSIONALISM,
PASSION.

They are the basic ingredients of every success. They become excellence if enriched with care for details and ability to harmoniously harmonize tradition and innovation.

We at Giblor's know that well.

This is why our daily commitment aims at create garments that can express your uniqueness to the fullest. Why choose between comfort and style if you can have it all? We want to give you the opportunity to define yourself also through what you wear. We will be by your side every day, for help you work at your best.

Your way.





119 Grigio / Grey



000 Nero / Black



004 Blu / Blue



DAMIANO

Dettagli / Details

- Sfiancata - Foderata
- 3 bottoni - 2 spacchi laterali

- Tight waisted - Lined
- 3 buttons - 2 side vents

Taglie / Sizes

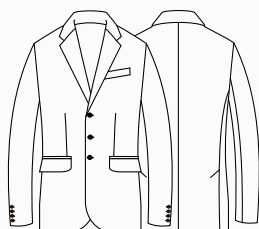
42 ÷ 60 Slim Fit

Art. 12P01C230

119 Grigio / Grey
000 Nero / Black
004 Blu / Blue

Tessuto / Fabric

53% poliestere 43% lana 4% elastan
53% polyester 43% wool 4% elastane
173 g / m²



MAURO

Dettagli / Details

- Foderato - 2 tasche alla francese
- 2 taschine posteriori

- Lined - 2 side pockets
- 2 rear pockets

Taglie / Sizes

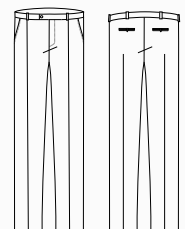
40 ÷ 64 Slim Fit

Art. 12P01P231

119 Grigio / Grey
000 Nero / Black
004 Blu / Blue

Tessuto / Fabric

53% poliestere 43% lana 4% elastan
53% polyester 43% wool 4% elastane
173 g / m²





Gonna / Skirt
MIA - Art. 12P01B268

VITTORIA

Dettagli / Details

- Sfiancata - Foderata - 2 bottoni
- Tight waisted - Lined - 2 buttons

Taglie / Sizes

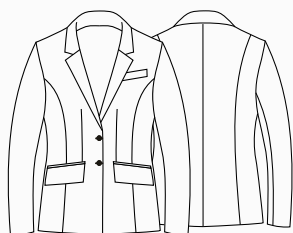
XS ÷ XXXL Slim Fit

Art. 12P01C232

119 Grigio / Grey
000 Nero / Black
004 Blu / Blue

Tessuto / Fabric

53% poliestere 43% lana 4% elasthan
53% polyester 43% wool 4% elastane
173 g / m²



MATILDE

Dettagli / Details

- Con passanti - Con zip nel fianco
- Belt loops - Side zip fastening

Taglie / Sizes

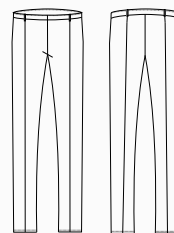
XS ÷ XXXL Slim Fit

Art. 12P01P233

119 Grigio / Grey
000 Nero / Black
004 Blu / Blue

Tessuto / Fabric

53% poliestere 43% lana 4% elasthan
53% polyester 43% wool 4% elastane
173 g / m²







Giacca **ELIO**



Giblor's
italian worklife specialist

Giacca **DANA**

DANA

Dettagli / Details

- Sfiancata
- Sfoderata
- 2 bottoni

- *Tight waisted*
- *Unlined*
- *2 buttons*

Taglie / Sizes

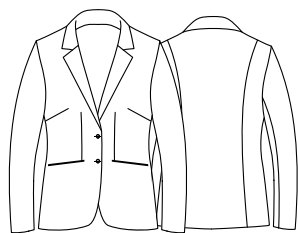
XS ÷ XXXL Slim Fit

Art. 20P01C901

004 Blu / Blue

Tessuto / Fabric

95% poliestere 5% elasthan
95% polyester 5% elastane
220 g / m²



LAYLA

Dettagli / Details

- Fondo stretto
- 2 tasche

- *Slim leg*
- *2 pockets*

Taglie / Sizes

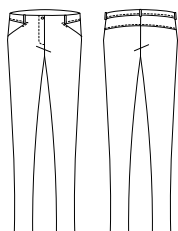
XS ÷ XXXL Slim Fit

Art. 20P01P903

004 Blu / Blue

Tessuto / Fabric

95% poliestere 5% elasthan
95% polyester 5% elastane
220 g / m²



Gonna abbinabile
Coordinated skirt
KATIA
Art. 17P01B986



ELIO



Dettagli / Details

- Sfoderata
- 2 bottoni

- Unlined
- 2 buttons

Taglie / Sizes

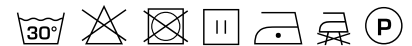
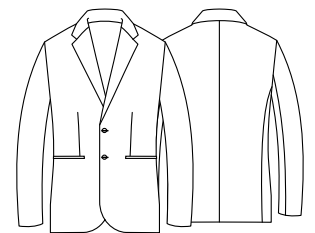
44 ÷ 58 Slim Fit

Art. 20P01C966

004 Blu / Blue

Tessuto / Fabric

95% poliestere 5% elasthan
95% polyester 5% elastane
220 g / m²



GIOVANNI



Dettagli / Details

- Sfoderato
- Fondo stretto
- 2 tasche alla francese
- 2 taschine posteriori

- Unlined
- Slim leg
- 2 side pockets
- 2 rear pockets

Taglie / Sizes

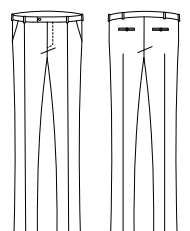
42 ÷ 58 Slim Fit

Art. 20P01P546

004 Blu / Blue

Tessuto / Fabric

95% poliestere 5% elasthan
95% polyester 5% elastane
220 g / m²



JOSEF

Dettagli / Details

- Sfiacata
- Sfoderata
- 2 bottoni
- 2 spacchi laterali

- *Tight waisted*
- *Unlined*
- *2 buttons*
- *2 side vents*

Taglie / Sizes

42 ÷ 58 Slim Fit

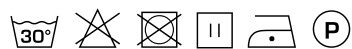
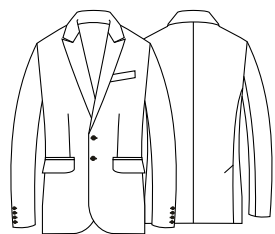


Art. 15P01C600

004 Blu / Blue

Tessuto / Fabric

70% poliestere 25% viscosa 5% elasthan
70% polyester 25% viscose 5% elastane
200 g / m²



ADAM

Dettagli / Details

- Fondo stretto
- 2 tasche alla francese
- 2 taschine posteriori

- *Slim leg*
- *2 side pockets*
- *2 rear pockets*

Taglie / Sizes

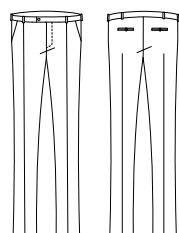
42 ÷ 56 Slim Fit

Art. 15P01P602

004 Blu / Blue

Tessuto / Fabric

70% poliestere 25% viscosa 5% elasthan
70% polyester 25% viscose 5% elastane
200 g / m²





ZAIRA

Dettagli / Details

- Sfiancata
- Sfoderata
- 2 bottoni

- Tight waisted
- Unlined
- 2 buttons

Taglie / Sizes

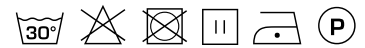
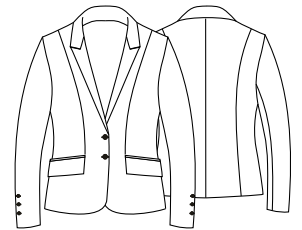
XS ÷ XXXL Slim Fit

Art. 15P01C603

004 Blu / Blue

Tessuto / Fabric

70% poliestere 25% viscosa 5% elasthan
70% polyester 25% viscose 5% elastane
200 g / m²



NOEMI

Dettagli / Details

- Fondo stretto
- 2 tasche alla francese
- 2 taschine posteriori

- Slim leg
- 2 side pockets
- 2 rear pockets

Taglie / Sizes

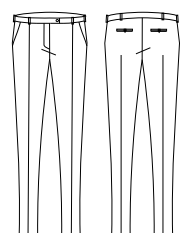
XS ÷ XXXL Slim Fit

Art. 15P01P605

004 Blu / Blue

Tessuto / Fabric

70% poliestere 25% viscosa 5% elasthan
70% polyester 25% viscose 5% elastane
200 g / m²



ILARY

Dettagli / Details

- Sfoderata

- Unlined

Taglie / Sizes

XS ÷ XXXL Slim Fit

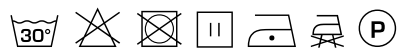
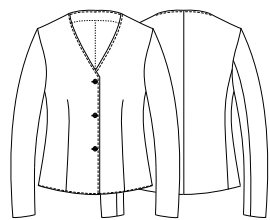


Art. 22P01C320

004 Blu / Blue

Tessuto / Fabric

95% poliestere 5% elastan
95% polyester 5% elastane
220 g / m²



GIORGIA

Dettagli / Details

- Fondo stretto - 2 tasche

- Slim leg - 2 pockets

Taglie / Sizes

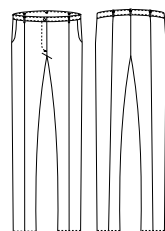
XS ÷ XXXL Slim Fit

Art. 22P01P321

004 Blu / Blue

Tessuto / Fabric

95% poliestere 5% elastan
95% polyester 5% elastane
220 g / m²



ILARY

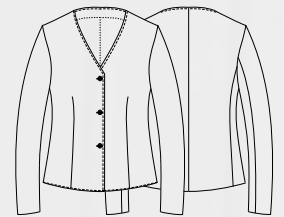
Dettagli / Details
Sfoderata

Unlined

Taglie / Sizes
XS ÷ XXXL Slim Fit

Art. 22P01C320
000 Nero / Black

Tessuto / Fabric
95% poliestere 5% elasthan
95% polyester 5% elastane
220 g / m²



GIORGIA

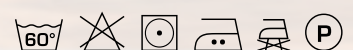
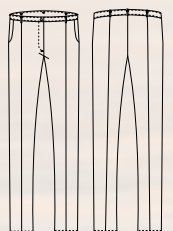
Dettagli / Details
- Fondo stretto - 2 tasche

- Slim leg - 2 pockets

Taglie / Sizes
XS ÷ XXXL Slim Fit

Art. 22P01P321
000 Nero / Black

Tessuto / Fabric
95% poliestere 5% elasthan
95% polyester 5% elastane
220 g / m²



FABIO

Dettagli / Details

- Sfoderata
- Doppia asola

- Unlined
- Cufflink

Taglie / Sizes

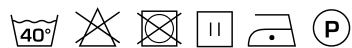
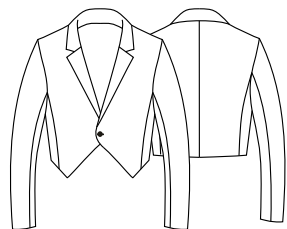
XS ÷ XXXL Slim Fit

Art. 182

000 Nero / Black
120 Panna / Cream

Tessuto / Fabric

100% poliestere
100% polyester
220 g / m²



Art. 182
120 Panna / Cream

VITTORIO

Dettagli / Details

- Sfoderata
- 1 bottone

- Unlined
- 1 button

Taglie / Sizes

XS ÷ XXXL Slim Fit

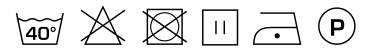
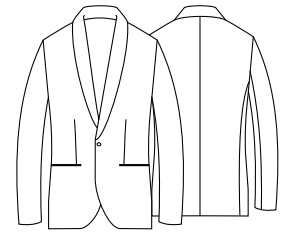


Art. 121

120 Panna / Cream
000 Nero / Black
00 Bianco / White

Tessuto / Fabric

100% poliestere
100% polyester
220 g / m²



Art. 121
000 Nero / Black



Art. 121
00 Bianco / White



NOVAK

Dettagli / Details

- Collo coreano
- Polsino regolabile

- Mandarin collar
- Adjustable cuff

Taglie / Sizes

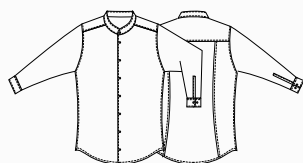
S ÷ 4XL Slim Fit

Art. 19P01N085

00 Bianco / White
000 Nero / Black

Tessuto / Fabric

65% poliestere 35% cotone
65% polyester 35% cotton
110 g / m²



VENUS

Dettagli / Details

- Collo coreano
- Mandarin collar

Taglie / Sizes

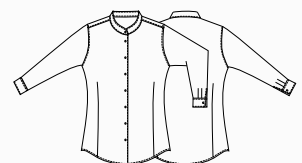
XS ÷ 4XL Regular Fit

Art. 19P01N086

000 Nero / Black
00 Bianco / White

Tessuto / Fabric

65% poliestere 35% cotone
65% polyester 35% cotton
110 g / m²



Giblor's
italian worklife specialist



Camicia **NOVAK**

ho.re.ca. & services

Camicie uomo e donna
Shirts and blouses

PETER

Dettagli / Details

- Collo classico
- Polsino regolabile

- Classic collar
- Adjustable cuff

Taglie / Sizes

S ÷ 4XL Slim Fit

Art. 22P01N088

118 Azzurro / Light blue

Art. 19P01N088

00 Bianco / White

000 Nero / Black

004 Blu / Blu

019 Grigio chiaro / Light grey

322 Marrone / Brown

Tessuto / Fabric

97% cotone 3% elasthan

97% cotton 3% elastane

96 g / m²





Art. 22P01N088
118 Azzurro / *Light blue*



Art. 19P01N088
000 Nero / *Black*



Art. 19P01N088
004 Blu / *Blue*



Art. 19P01N088
019 Grigio chiaro / *Light grey*



Art. 19P01N088
322 Marrone / *Brown*

ho.re.ca. & services

Camicie uomo e donna
Shirts and blouses

FLAVIA

Dettagli / Details

- Collo classico
- Classic collar

Taglie / Sizes

XS ÷ 4XL Regular Fit

Art. 22P01N087

118 Azzurro / Light blue

Art. 19P01N087

00 Bianco / White

000 Nero / Black

004 Blu / Blu

019 Grigio chiaro / Light grey

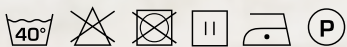
322 Marrone / Brown

Tessuto / Fabric

97% cotone 3% elasthan

97% cotton 3% elastane

96 g / m²





Art. 22P01N087
118 Azzurro / *Light blue*



Art. 19P01N087
000 Nero / *Black*



Art. 19P01N087
004 Blu / *Blue*



Art. 19P01N087
019 Grigio chiaro / *Light grey*



Art. 19P01N087
322 Marrone / *Brown*

ho.re.ca. & services

Camicie uomo e donna
Shirts and blouses

BORIS

Dettagli / Details

- Collo classico
- Polsino regolabile

- Classic collar
- Adjustable cuff

Taglie / Sizes

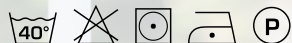
S ÷ 4XL Slim Fit

Art. 19P01N090

Q322 Marrone / Brown

Tessuto / Fabric

100% cotone
100% cotton
100 g / m²



LILLY

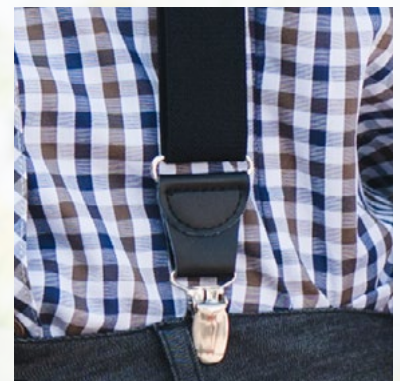
Dettagli / Details
- Collo classico

- Classic collar

Taglie / Sizes
XS ÷ 4XL Slim Fit

Art. 19P01N094
Q322 Marrone / Brown

Tessuto / Fabric
100% cotone
100% cotton
100 g / m²



BRETELLE / SUSPENDERS

PRINCE

Dettagli / Details

- Collo classico
- Polsino regolabile

- Classic collar
- Adjustable cuff

Taglie / Sizes

XS ÷ 5XL Slim Fit

Art. 11P01056

00 Bianco / White
000 Nero / Black

Tessuto / Fabric

65% poliestere 35% cotone
65% polyester 35% cotton
110 g / m²



Art. 11P01056

000 Nero / Black





AURORA

Dettagli / Details

- Collo classico

- Classic collar

Taglie / Sizes

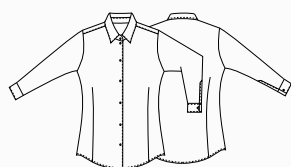
XS ÷ XXXL Regular Fit

Art. 1600

00 Bianco / White

Tessuto / Fabric

65% poliestere 35% cotone
65% polyester 35% cotton
110 g / m²



FARA

Dettagli / Details

- Collo classico

- Classic collar

Taglie / Sizes

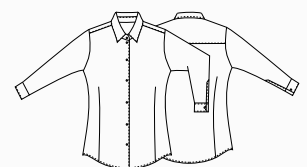
XS ÷ XXXL Regular Fit

Art. 11P01057

000 Nero / Black

Tessuto / Fabric

65% poliestere 35% cotone
65% polyester 35% cotton
110 g / m²





PRINCE

Dettagli / Details

- Manica corta
- Collo classico
- 1 tasca

- Short sleeve
- Classic collar
- 1 pocket

Taglie / Sizes

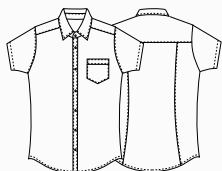
XS ÷ 5XL Slim Fit

Art. 11P01056C

00 Bianco / White

Tessuto / Fabric

65% poliestere 35% cotone
65% polyester 35% cotton
110 g / m²



AURORA

Dettagli / Details

- Collo classico
- Manica corta

- Classic collar
- Short sleeve

Taglie / Sizes

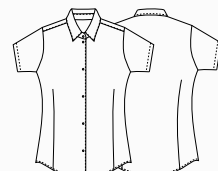
XS ÷ XXL Regular Fit

Art. 1600C

00 Bianco / White

Tessuto / Fabric

65% poliestere 35% cotone
65% polyester 35% cotton
110 g / m²



SHARM

Dettagli / Details

- Manica 3/4 con scollo fantasia

- 3/4 Sleeve

Taglie / Sizes

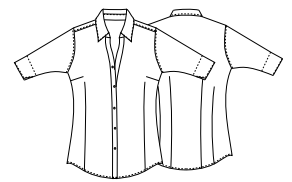
XS ÷ XXXL Regular Fit

Art. 1003

00 Bianco / White

Tessuto / Fabric

65% poliestere 35% cotone
65% polyester 35% cotton
110 g / m²



Art. 1003N

000 Nero / Black



LELA

Dettagli / Details

- Collo classico

- Classic collar

Taglie / Sizes

XS ÷ XXXL Slim Fit

Art. 10M164

00 Bianco / White

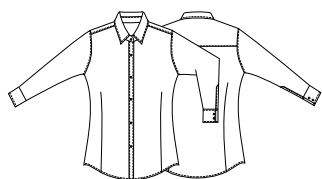
000 Nero / Black

Tessuto / Fabric

97% cotone 3% elasthan

97% cotton 3% elastane

96 g / m²



Art. 10M164

000 Nero / Black



Giblor's

italian worklife specialist



COLLEZIONE 2022

Scarica il catalogo completo su giblors.com



Giblor's

italian work*life* specialist



Viale dei Trasporti, 6/A - 6/B
41012 CARPI (MO) - Italy
Tel. +39.059.654.602 Fax + 39.059.654.634
www.giblors.com info@giblors.com