

**Giblor's**  
italian worklife specialist

**Health**  
2021 COLLECTION



# Be yourself

PERSONALITÀ,  
PROFESSIONALITÀ,  
PASSIONE.

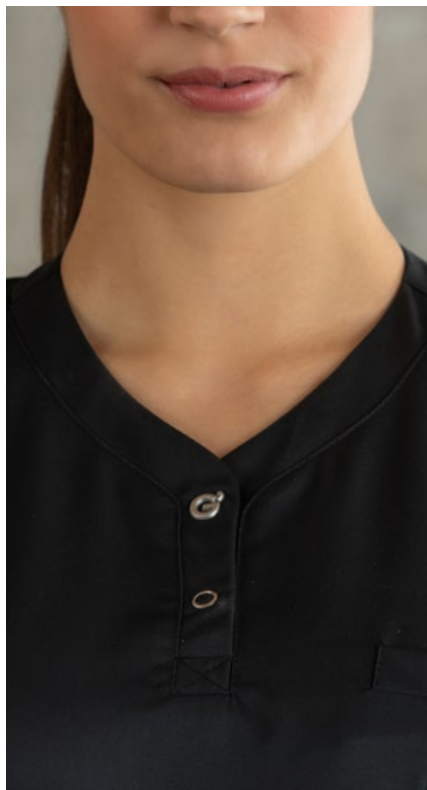
Sono ingredienti alla base di ogni successo. Diventano eccellenza se arricchiti con cura per i dettagli e capacità di armonizzare sapientemente tradizione e innovazione.

Noi di Giblor's lo sappiamo bene.

È per questo che il nostro impegno quotidiano punta a creare capi in grado di esprimere al massimo la tua unicità.

Perché scegliere tra comfort e stile se puoi avere tutto? Vogliamo darti la possibilità di definirti anche attraverso ciò che indossi. Noi saremo al tuo fianco ogni giorno, per aiutarti a lavorare al meglio.

A modo tuo.



# wear Giblor's

PERSONALITY,  
PROFESSIONALISM,  
PASSION.

*They are the basic ingredients of every success. They become excellence if enriched with care for details and ability to harmoniously harmonize tradition and innovation.*

*We at Giblor's know that well.*

*This is why our daily commitment aims at create garments that can express your uniqueness to the fullest. Why choose between comfort and style if you can have it all? We want to give you the opportunity to define yourself also through what you wear. We will be by your side every day, for help you work at your best.*

*Your way.*

# Health & Wellness<sup>2021</sup>

Una collezione contemporanea e innovativa: tecnologie all'avanguardia, tessuti sempre più performanti e l'inconfondibile stile **Giblor's**.

La collezione **Health & Wellness 2021** segna un passo in avanti nella visione dell'abbigliamento professionale firmato **Giblor's**, ed è un passo deciso e chiaro: offrire ai propri clienti sul mercato globale unicamente capi che sono il risultato della perfetta combinazione tra tecnologia, comfort ed estetica, senza compromessi.

Ma non basta lo sguardo rivolto al futuro, bisogna fare scelte concrete, che si traducano in segni tangibili, ed quello che **Giblor's** ha fatto in questi anni, ed in maniera ancora più decisa in questa collezione 2021.

È così che tutti i capi che troverete in questo catalogo garantiscono performance in grado di fare davvero la differenza nelle ore di lavoro quotidiano.

Tutti i tessuti utilizzati sono frutto di ricerche e miglioramenti continui e vengono sottoposti ad i migliori trattamenti disponibili, grazie ai quali assicurano la massima traspirabilità, lavaggi anche a alte temperature e facilità di manutenzione. Molte delle nostre divise inoltre non necessitano di stiratura e asciugano rapidamente, il che si traduce anche in una maggiore durata nel tempo. Ma non è tutto: i capi **Giblor's** restano inalterati, non si restringono e mantengono i colori brillanti e stabili nel tempo.

L'esperienza, le conoscenze e le capacità del nostro team nel lavorare questi tessuti chiudono il cerchio, consentendo di confezionare capi dal comfort eccellente, ergonomici e dalla perfetta vestibilità, realizzati tenendo conto del tipo di utilizzo e della fluidità necessaria nei movimenti quotidiani.

Qualsiasi capo **Giblor's** sceglierete di indossare, siamo sicuri che ne sarete entusiasti, quanto noi siamo orgogliosi del nostro impegno nell'offrirvi il meglio.

*A contemporary and innovative collection: cutting-edge technologies, increasingly performing fabrics and the unmistakable **Giblor's** style.*

*The **Health & Wellness 2021** collection marks a step forward in the vision of professional clothing by **Giblor's**, and is a decisive and clear step: to offer its customers on the global market only garments that are the result of the perfect combination of technology, comfort and aesthetics, without compromises.*

*But looking to the future is not enough, we need to make concrete choices, which translate into tangible signs, and what **Giblor's** has done in recent years, and in an even more decisive way in this 2021 collection*

*This is how all the garments that you will find in this catalog guarantee performances that can really make a difference in the hours of daily work.*

*All the fabrics used are the result of continuous research and improvements and are subjected to the best treatments available, thanks to which they ensure maximum breathability, washing even at high temperatures and ease of maintenance. Many of our uniforms also do not need to be ironed and dry quickly, which also results in greater durability.*

*But that's not all: **Giblor's** garments remain unchanged, do not shrink and keep their colors bright and stable over time.*

*The experience, knowledge and skills of our team in working these fabrics close the circle, allowing us to make garments with excellent comfort, ergonomics and a perfect fit, made taking into account the type of use and the fluidity needed in daily movements.*

*Whichever **Giblor's** garment you choose to wear, we are sure you will be thrilled, as we are proud of our commitment to offer you the best.*



LUXSATIN



LUXSATIN



## DIVA

### Dettagli / Details

- 3 tasche
- Bottoni a pressione
- Polsino con bottone automatico
- Martingala

- 3 pockets
- Press studs
- Cuff with press stud
- Half belt on the back

### Taglie / Sizes

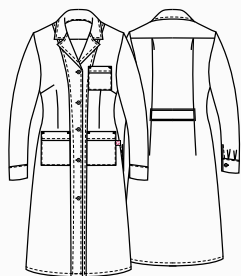
XS ÷ 4XL Slim Fit

### Art. 11P03R82

00 Bianco / White

### Tessuto / Fabric

50% cotone 50% poliestere  
50% cotton 50% polyester  
180 g / m<sup>2</sup>



## SAM

### Dettagli / Details

- 3 tasche
- Bottoni a pressione
- Polsino con bottone automatico
- Martingala con automatici

- 3 pockets
- Press studs
- Cuff with press stud
- Half belt with press studs

### Taglie / Sizes

S ÷ XXXL Slim Fit

### Art. 11P03R34

00 Bianco / White

### Tessuto / Fabric

50% cotone 50% poliestere  
50% cotton 50% polyester  
180 g / m<sup>2</sup>







## ETHAN

### Dettagli / Details

- 3 tasche
- Polsino con bottone

- 3 pockets
- Cuff with button

### Taglie / Sizes

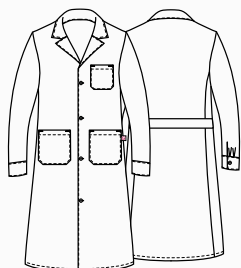
XS ÷ XXXL Regular Fit

### Art. 10M1315

00 Bianco / White

### Tessuto / Fabric

100% cotone  
100% cotton  
185 g / m<sup>2</sup>



## SIMONA

### Dettagli / Details

- 3 tasche
- Polsino con bottone

- 3 pockets
- Cuff with button

### Taglie / Sizes

XS ÷ XXXL Regular Fit

### Art. 10M1320

00 Bianco / White

### Tessuto / Fabric

100% cotone  
100% cotton  
185 g / m<sup>2</sup>



LUXSATIN



## MARTA

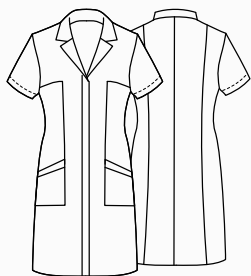
### Dettagli / Details

- 2 tasche
- Taschino sul petto
- Abbottonatura nascosta con automatici

- 2 pockets
- Breast pocket
- Concealed buttoning with press studs

### Taglie / Sizes

XS ÷ XXXL Slim Fit



### Art. 17P03R977

00 Bianco / White

### Tessuto / Fabric

50% cotone 50% poliestere  
50% cotton 50% polyester  
180 g / m<sup>2</sup>



LUXSATIN



## MARZIA

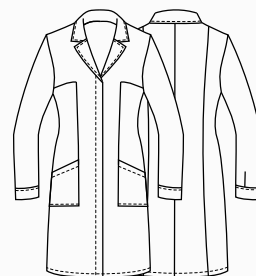
### Dettagli / Details

- 2 tasche - Taschino sul petto
- Abbottonatura nascosta con automatici
- Polsino con bottone a pressione

- 2 pockets - Breast pocket
- Concealed buttoning with press studs
- Cuffs with press studs

### Taglie / Sizes

XS ÷ XXXL Slim Fit



### Art. 19P03R123

00 Bianco / White

### Tessuto / Fabric

50% cotone 50% poliestere  
50% cotton 50% polyester  
180 g / m<sup>2</sup>





## ALESSIA

### Dettagli / Details

- 2 tasche
- Abbottonatura nascosta con automatici
- Taschino sul petto
- Polsino con bottone a pressione

- 2 pockets
- Concealed buttoning with press stud
- Breast pocket
- Cuff with press studs

### Taglie / Sizes

XS ÷ XXXL Slim Fit

### Art. 16P03R837

00 Bianco / White

### Tessuto / Fabric

50% lyocell 50% poliestere  
50% lyocell 50% polyester  
180 g / m<sup>2</sup>



## ROCCO

### Dettagli / Details

- 2 tasche - Taschino sul petto
- Abbottonatura nascosta con automatici
- Spacco

- 2 pockets - Breast pocket
- Concealed buttoning with press stud
- Vent

### Taglie / Sizes

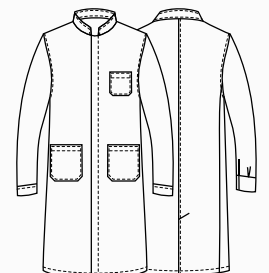
S ÷ XXXL Slim Fit

### Art. 19P03R122

00 Bianco / White

### Tessuto / Fabric

50% lyocell 50% poliestere  
50% lyocell 50% polyester  
180 g / m<sup>2</sup>





# GABRIELE

## Dettagli / Details

- Chiusura con zip rovesciata
- Taschino sul petto
- 2 tasche
- Polsini con elastico
- Doppio cursore

- Inverted zip fastening
- Breast pocket
- 2 pockets
- Cuffs with elastic band
- Double cursor

## Taglie / Sizes

S ÷ 4XL Slim Fit

### Art. 20P03K191

00 Bianco / White

### Art. 21P03K194

004 Blu / Blue

### Art. 20P03K194

002 Verde / Green

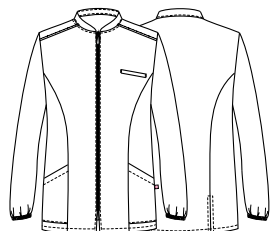
118 Azzurro / Light blue

## Tessuto / Fabric

100% cotone

100% cotton

185 g / m<sup>2</sup>



**PANTALONI COORDINABILI**  
**MATCHING PANTS**

Cat. Health & Wellness 2021  
pag. 68



**Art. 21P03K194**  
004 Blu / Blue



**Art. 20P03K194**  
118 Azzurro / Light blue



**Art. 20P03K194**  
002 Verde / Green



# PIERO

## Dettagli / Details

- 2 tasche
- Taschino sul petto
- 2 spacchetti laterali
- 2 pockets
- Breast pocket
- 2 side vents

## Art. 1330

00 Bianco / White

## Art. 21P03K1335

004 Blu / Blue

## Art. 1335

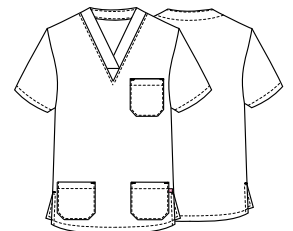
002 Verde / Green  
118 Azzurro / Light blue

## Taglie / Sizes

XS ÷ 4XL Slim Fit

## Tessuto / Fabric

100% cotone  
100% cotton  
185 g / m<sup>2</sup>



## PANTALONI COORDINABILI MATCHING PANTS

Cat. Health & Wellness 2021  
pag. 68



**Art. 21P03K1335**  
004 Blu / Blue



**Art. 1335**  
118 Azzurro / Light blue



**Art. 1335**  
002 Verde / Green



# ALICE

## Dettagli / Details

- Chiusura con zip rovesciata
- Taschino sul petto
- 2 tasche
- Polsini con elastico
- Doppio cursore

- Inverted zip fastening
- Breast pocket
- 2 pockets
- Cuffs with elastic band
- Double cursor

## Art. 20P03K192

00 Bianco / White

## Art. 21P03K195

004 Blu / Blue

## Art. 20P03K195

002 Verde / Green

118 Azzurro / Light blue

## Taglie / Sizes

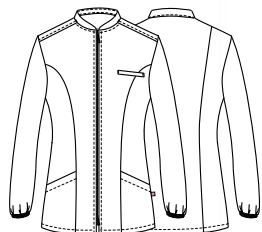
XS ÷ XXXL Slim Fit

## Tessuto / Fabric

100% cotone

100% cotton

185 g / m<sup>2</sup>



PANTALONI COORDINABILI  
MATCHING PANTS

Cat. Health & Wellness 2021  
pag. 68



Art. 21P03K195  
004 Blu / Blue



Art. 20P03K195  
118 Azzurro / Light blue



Art. 20P03K195  
002 Verde / Green





# MILENA

**Dettagli / Details**

- 2 tasche
- Taschino sul petto
- 2 spacchetti laterali
- 2 pockets
- Breast pocket
- 2 side vents

**Art. 20P03K193**  
00 Bianco / White

**Art. 21P03K196**  
004 Blu / Blue

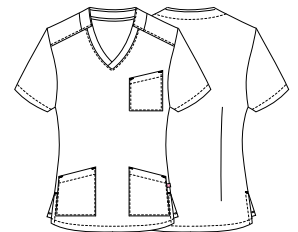
**Art. 20P03K196**  
002 Verde / Green  
118 Azzurro / Light blue

**Taglie / Sizes**

XS ÷ XXXL Slim Fit

**Tessuto / Fabric**

100% cotone  
100% cotton  
185 g / m<sup>2</sup>



**PANTALONI COORDINABILI**  
**MATCHING PANTS**  
Cat. Health & Wellness 2021  
pag. 68



**Art. 21P03K196**  
004 Blu / Blue



**Art. 20P03K196**  
118 Azzurro / Light blue



**Art. 20P03K196**  
002 Verde / Green



# GIADA

## Dettagli / Details

- 2 tasche
- Taschino sul petto
- Abbottonatura nascosta con automatici
- Polsino in maglia
- Inserti in rete

- 2 pockets
- Breast pocket
- Concealed buttoning with press studs
- Knitted cuff
- Network fabric panels

## Taglie / Sizes

XS ÷ XXXL Slim Fit



### Art. 21P03K945

019 Grigio chiaro / Light grey

### Art. 17P03K945

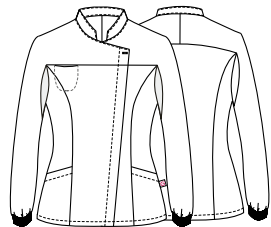
00 Bianco / White

004 Blu / Blue

029 Pistacchio / Pistachio

## Tessuto / Fabric

50% lyocell 50% poliestere  
50% lyocell 50% polyester  
180 g / m<sup>2</sup>



PANTALONI COORDINABILI  
MATCHING PANTS

Cat. Health & Wellness 2021  
pag. 36 / 37



Art. 21P03K945  
019 Grigio chiaro / Light grey



Art. 17P03K945  
004 Blu / Blue



Art. 17P03K945  
029 Pistacchio / Pistachio





# SILVANO

## Dettagli / Details

- 2 tasche
- Taschino sul petto
- Abbottonatura nascosta con automatici
- Polsino in maglia
- Inserti in rete
  
- 2 pockets
- Breast pocket
- Concealed buttoning with press studs
- Knitted cuff
- Network fabric panels

## Taglie / Sizes

S ÷ 4XL Slim Fit

## Art. 21P03K944

019 Grigio chiaro / Light grey

## Art. 17P03K944

00 Bianco / White

004 Blu / Blue

029 Pistacchio / Pistachio

## Tessuto / Fabric

50% lyocell 50% poliestere  
50% lyocell 50% polyester  
180 g / m<sup>2</sup>



## PANTALONI COORDINABILI MATCHING PANTS

Cat. Health & Wellness 2021  
pag. 34 / 35



## Art. 21P03K944

019 Grigio chiaro / Light grey



## Art. 17P03K944

004 Blu / Blue



## Art. 17P03K944

029 Pistacchio / Pistachio





# GIULIANA

## Dettagli / Details

- 2 tasche
- Taschino portapenne
- Abbottonatura nascosta con automatici
- 2 spacchetti laterali

- 2 pockets
- Pen pocket
- Concealed buttoning with press stud
- 2 side vents

## Taglie / Sizes

XS ÷ XXXL Slim Fit



### Art. 17P03K943

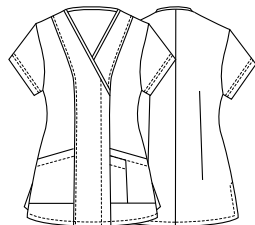
004 Blu / Blue  
029 Pistacchio / Pistachio

### Art. 21P03K943

00 Bianco / White  
019 Grigio chiaro / Light grey

## Tessuto / Fabric

50% lyocell 50% poliestere  
50% lyocell 50% polyester  
180 g / m<sup>2</sup>



**PANTALONI COORDINABILI**  
**MATCHING PANTS**

Cat. Health & Wellness 2021 - pag. 36 / 37



**Art. 17P03K943**  
029 Pistacchio / Pistachio



**Art. 21P03K943**  
019 Grigio chiaro / Light grey



**Art. 21P03K943**  
00 Bianco / White





# GIULIANO

## Dettagli / Details

2 tasche  
Taschino sul petto  
- 2 spacchetti laterali

2 pockets  
- Breast pocket  
- 2 side vents

## Taglie / Sizes

S ÷ 4XL Slim Fit

### Art. 17P03K942

004 Blu / Blue  
029 Pistacchio / Pistachio

### Art. 21P03K237

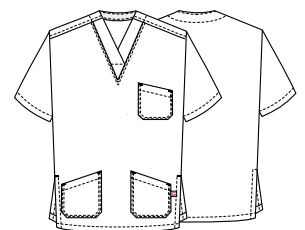
00 Bianco / White

### Art. 21P03K942

019 Grigio chiaro / Light grey

## Tessuto / Fabric

50% lyocell 50% poliestere  
50% lyocell 50% polyester  
180 g / m<sup>2</sup>



## PANTALONI COORDINABILI MATCHING PANTS

Cat. Health & Wellness 2021 - pag. 34 / 35



Art. 17P03K943  
029 Pistacchio / Pistachio



Art. 21P03K942  
019 Grigio chiaro / Light grey



Art. 21P03K237  
00 Bianco / White



# CONNOR

## Dettagli / Details

- 2 tasche
- Taschino sul petto
- Inserti in rete

- 2 pockets
- Breast pocket
- Network fabric panels

## Taglie / Sizes

S ÷ 4XL Slim Fit

## Art. 21P03K238

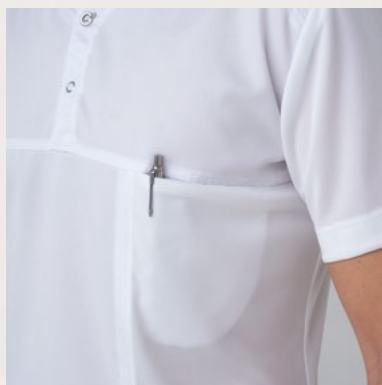
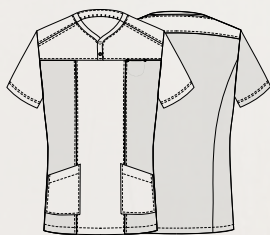
00 Bianco / White  
000 Nero / Black

## Tessuto 1 / Fabric 1

50% lyocell 50% poliestere  
50% lyocell 50% polyester  
180 g / m<sup>2</sup>

## Tessuto 2 / Fabric 2

100% poliestere  
100% polyester  
160 g / m<sup>2</sup>



Disponibile anche bianca  
Also available in white

 **Tencel**<sup>™</sup>  
Feels so right

 **Fresh & Stretch**





## CHLOE

### Dettagli / Details

- 2 tasche
- Taschino sul petto
- Inserti in rete

- 2 pockets
- Breast pocket
- Network fabric panels

### Taglie / Sizes

XS ÷ XXXL Slim Fit

### Art. 21P03K239

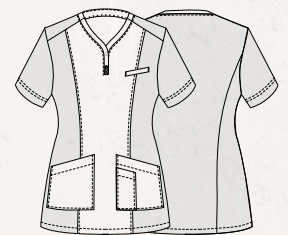
00 Bianco / White  
000 Nero / Black

### Tessuto 1 / Fabric 1

50% lyocell 50% poliestere  
50% lyocell 50% polyester  
180 g / m<sup>2</sup>

### Tessuto 2 / Fabric 2

100% poliestere  
100% polyester  
160 g / m<sup>2</sup>



Disponibile anche nera  
Also available in black

**Tencel™**  
Feels so right

**Fresh & Stretch**





# MATTIA

## Dettagli / Details

- 1 tasca
- Taschino sul petto
- Chiusura con zip rovesciata

- 1 pocket
- Breast pocket
- Inverted zip fastening

## Taglie / Sizes

S ÷ 4XL Slim Fit

## Art. 21P02K246

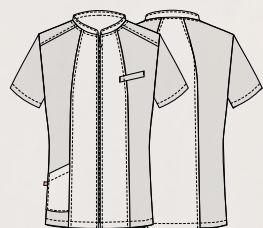
00 Bianco / White  
000 Nero / Black

## Tessuto / Fabric

100% poliestere  
100% polyester  
86 g / m<sup>2</sup>

## Tessuto rete / Network fabric

100% poliestere  
100% polyester  
160 g / m<sup>2</sup>



Disponibile anche nera  
Also available in black



## NICOLE

### Dettagli / Details

- 1 tasca
- Taschino sul petto
- Chiusura con zip rovesciata
- 2 spacchetti

- 1 pocket
- Breast pocket
- Inverted zip fastening
- 2 vents

### Taglie / Sizes

XS ÷ XXXL Slim Fit

### Art. 21P02K247

00 Bianco / White  
000 Nero / Black

### Tessuto / Fabric

100% poliestere  
100% polyester  
86 g / m<sup>2</sup>

### Tessuto rete / Network fabric

100% poliestere  
100% polyester  
160 g / m<sup>2</sup>



Disponibile anche nera  
Also available in black

BIONIC  
FINISH C<sub>6</sub>

Fresh &  
Stretch



# HARRY

## Dettagli / Details

- Taschino sul petto
- Inserti in rete
- Bottoni a pressione

- Breast pocket
- Network fabric panels
- Press studs

## Taglie / Sizes

S ÷ 4XL Slim Fit

## Art. 20P02K217

00 Bianco / White

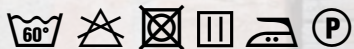
000 Nero / Black

## Tessuto / Fabric

100% poliestere

100% polyester

86 g / m<sup>2</sup>



Disponibile anche nera  
Also available in black

BIONIC  
FINISH<sup>®</sup> C<sub>6</sub>

Fresh &  
Stretch





## MEGAN

### Dettagli / Details

- Taschino sul petto
- Inserti in rete
- Bottoni a pressione
- Breast pocket
- Network fabric panels
- Press studs

### Taglie / Sizes

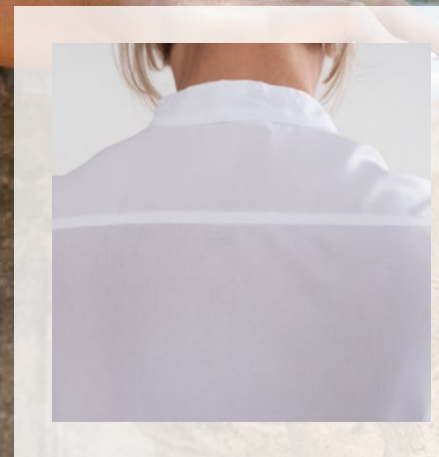
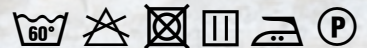
XS ÷ XXXL Slim Fit

### Art. 20P02K218

000 Nero / Black  
00 Bianco / White

### Tessuto / Fabric

100% poliestere  
100% polyester  
86 g / m<sup>2</sup>



Disponibile anche bianca  
Also available in white

BIONIC  
FINISH<sup>®</sup> C<sub>6</sub>

Fresh &  
Stretch

# ALBERTO

## Dettagli / Details

- 2 tasche
- Taschino sul petto
- 2 spacchetti laterali

- 2 pockets
- Breast pocket
- 2 side vents

## Taglie / Sizes

XS ÷ 4XL Regular Fit

LUXSATIN

## Art. 10M2019

00 Bianco / White

## Art. 10M2020

002 Verde / Green

118 Azzurro / Light blue

004 Blu / Blue

321 Bluette / Royal

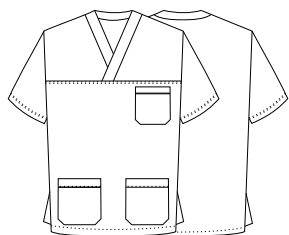
519 Bordeaux / Burgundy

## Tessuto / Fabric

50% cotone 50% poliestere

50% cotton 50% polyester

180 g / m<sup>2</sup>



PANTALONI COORDINABILI  
MATCHING PANTS

pag. 29





Art. 10M2020  
002 Verde / Green



LUXSATIN



Art. 10M2020  
118 Azzurro / Light blue



LUXSATIN



Art. 10M2020  
004 Blu / Blue



LUXSATIN



Art. 10M2020  
321 Bluette / Royal



LUXSATIN



Art. 10M2020  
519 Bordeaux / Burgundy



LUXSATIN

ACCESSORI COORDINABILI  
MATCHING ACCESSORIES  
Cat. Health & Wellness 2021 - pag. 73

# MARGHERITA

## Dettagli / Details

- 2 tasche
- Taschino sul petto
- 2 spacchetti laterali

- 2 pockets
- Breast pocket
- 2 side vents

## Taglie / Sizes

XS ÷ XXXL Regular Fit

LUXSATIN

## Art. 10M2062

00 Bianco / White

## Art. 10M2062C

002 Verde / Green

118 Azzurro / Light blue

004 Blu / Blue

321 Bluette / Royal

519 Bordeaux / Burgundy

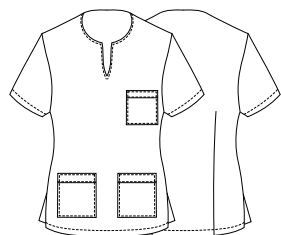
597 Lilla / Lilac

## Tessuto / Fabric

50% cotone 50% poliestere

50% cotton 50% polyester

180 g / m<sup>2</sup>



PANTALONI COORDINABILI  
MATCHING PANTS

pag. 29





Art. 10M2062C  
002 Verde / Green



LUXSATIN



Art. 10M2062C  
118 Azzurro / Light blue



LUXSATIN



Art. 10M2062C  
004 Blu / Blue



LUXSATIN



Art. 10M2062C  
321 Bluette / Royal



LUXSATIN



Art. 10M2062C  
519 Bordeaux / Burgundy



LUXSATIN



Art. 10M2062C  
597 Lilla / Lilac



LUXSATIN

ACCESSORI COORDINABILI  
MATCHING ACCESSORIES  
Cat. Health & Wellness 2021 - pag. 73

# RUGGERO

## Dettagli / Details

- 1 tasca
- Taschino sul petto
- Chiusura con zip rovesciata
- 2 spacchetti

- 1 pocket
- Breast pocket
- Inverted zip fastening
- 2 vents

## Taglie / Sizes

S ÷ 4XL Slim Fit

LUXSATIN

### Art. 21P03K489

00 Bianco / White

### Art. 17P03K489

519 Bordeaux / Burgundy

118 Azzurro / Light blue

321 Bluette / Royal

### Art. 14P03K489

002 Verde / Green

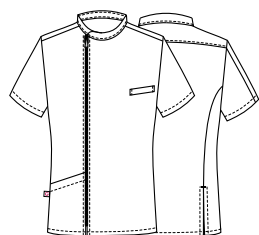
004 Blu / Blue

## Tessuto / Fabric

50% cotone 50% poliestere

50% cotton 50% polyester

180 g / m<sup>2</sup>



PANTALONI COORDINABILI  
MATCHING PANTS

pag. 29



**Art. 17P03K489**  
519 Bordeaux / Burgundy

LUXSATIN



**Art. 17P03K489**  
118 Azzurro / Light blue

LUXSATIN



**Art. 17P03K489**  
321 Bluette / Royal

LUXSATIN



**Art. 14P03K489**  
002 Verde / Green

LUXSATIN



**Art. 14P03K489**  
004 Blu / Blue

LUXSATIN

**ACCESSORI COORDINABILI**  
**MATCHING ACCESSORIES**  
Cat. Health & Wellness 2021 - pag. 73



# TANIA

## Dettagli / Details

- 1 tasca
- Taschino sul petto
- Abbottonatura nascosta con automatici
- 2 spacchetti

- 1 pocket
- Breast pocket
- Concealed buttoning with press studs
- 2 vents

## Taglie / Sizes

XS ÷ XXXL Slim Fit

## Art. 21P03K242

0-004 Bianco Blu / White Blue  
0-002 Bianco Verde / White Green

## Tessuto / Fabric

50% cotone 50% poliestere  
50% cotton 50% polyester  
180 g / m<sup>2</sup>



Disponibile anche bianco verde  
Also available in white green

LUXSATIN







**Art. 10M2061**  
00 Bianco / White  
180 g / m<sup>2</sup>



LUXSATIN



**Art. 10M2061C**  
597 Lilla / Lilac  
180 g / m<sup>2</sup>



LUXSATIN



**Art. 10M2061C**  
002 Verde / Green  
180 g / m<sup>2</sup>



LUXSATIN



**Art. 10M2061C**  
519 Bordeaux / Burgundy  
180 g / m<sup>2</sup>



LUXSATIN

SCOPRI LA SELEZIONE COMPLETA DI PANTALONI SU GIBLORS.COM  
DISCOVER THE COMPLETE SELECTION OF TROUSERS ON GIBLORS.COM



**Art. 14P03P556**  
004 Blu / Blue  
180 g / m<sup>2</sup>



LUXSATIN



**Art. 10M2061C**  
118 Azzurro / Light blue  
180 g / m<sup>2</sup>



LUXSATIN



**Art. 10M2061C**  
321 Bluette / Royal  
180 g / m<sup>2</sup>



LUXSATIN

# BANDANA

## Taglie / Sizes

Taglia unica / One size

Art. 21P05I263

## Tessuto / Fabric

100% poliestere

100% polyester

86 g / m<sup>2</sup>



Art. 21P05I263

F036 Dentifricio

Toothpaste



Art. 21P05I263

F035 Denti

Teeth



Art. 21P05I263

F030 Dolci

Sweets



Art. 21P05I263

F034 Cerotti

Plasters



Art. 21P05I263

F037 Formule

Formulas



Art. 21P05I263

F031 Lettere

Letters



Art. 21P05I263

F032 Mix

Mix



Art. 21P05I263

F008 Lui e Lei

Him and Her

# BANDANA

Taglie / Sizes  
Taglia unica / One size

Art. 21P05I263

Tessuto / Fabric  
100% poliestere  
100% polyester  
86 g / m<sup>2</sup>



Art. 21P05I263  
F038 Leone nero  
Black lion



Art. 21P05I263  
F028 Coniglietti  
Bunnies



Art. 21P05I263  
F026 Gatti  
Cats



Art. 21P05I263  
F027 Tucani  
Toucans



Art. 21P05I263  
F029 Pesci  
Fishes



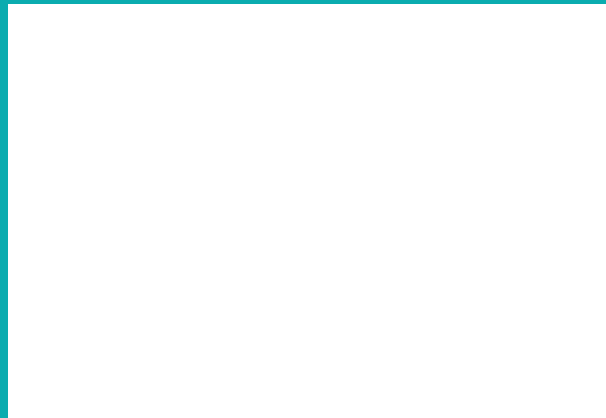
Art. 21P05I263  
F033 Cani  
Dogs



Art. 21P05I263  
F007 Cane e Gatto  
Dog and Cat

Scarica il catalogo completo su [giblors.com](http://giblors.com)

**Giblor's**  
italian work*life* specialist



Viale dei Trasporti, 6/A - 6/B  
41012 CARPI (MO) - Italy  
Tel. +39.059.654.602 Fax + 39.059.654.634  
[www.giblors.com](http://www.giblors.com) [info@giblors.com](mailto:info@giblors.com)