

Giblor's

italian work/life specialist



2022 COLLECTION

GILET E GREMBIULI / WAISTCOATS AND APRONS

& Ho.Re.Ca. SERVICES

Il lavoro con il pubblico è fatto di sollecitudine,
dedizione e piccole attenzioni.
Si realizza appieno nel delicato equilibrio tra
dettagli classici e gradite sorprese.

*Working with the public is made of solicitude,
dedication and small attentions. It is fully realized
in the delicate balance between classic details
and pleasant surprises.*

Esattamente ciò che la linea **Giblor's**
Ho.Re.Ca & Services offre a
te, che ti dedichi ad offrire servizi capaci di
accendere il sorriso sul volto di ogni cliente.
Anche il più esigente.

*Exactly what the **Giblor's** line **Ho.Re.Ca**
& Services offers a you, dedicated to
offering services capable of light up the smile on
every customer's face.
Even the most demanding.*

Capi eleganti e funzionali, con una vestibilità
perfetta e con la massima coordinabilità:
abbiamo creato per te una collezione ampia
e varia, che spazia da pezzi senza tempo alle
ultime novità del design.

*Elegant and functional garments, with a perfect
fit and with maximum coordination: we have
created an extensive collection for you and
varied, ranging from timeless pieces to
latest design news.*

Il mix perfetto tra impegno e stile.

The perfect mix between commitment and style.

Giblor's
italian work/life specialist

Be yourself

PERSONALITÀ,
PROFESSIONALITÀ,
PASSIONE.

Sono ingredienti alla base di ogni successo. Diventano eccellenza se arricchiti con cura per i dettagli e capacità di armonizzare sapientemente tradizione e innovazione.

Noi di Giblor's lo sappiamo bene.

È per questo che il nostro impegno quotidiano punta a creare capi in grado di esprimere al massimo la tua unicità. Perché scegliere tra comfort e stile se puoi avere tutto? Vogliamo darti la possibilità di definirti anche attraverso ciò che indossi. Noi saremo al tuo fianco ogni giorno, per aiutarti a lavorare al meglio.

A modo tuo.



wear Giblor's

PERSONALITY,
PROFESSIONALISM,
PASSION.

They are the basic ingredients of every success. They become excellence if enriched with care for details and ability to harmoniously harmonize tradition and innovation.

We at Giblor's know that well.

This is why our daily commitment aims at create garments that can express your uniqueness to the fullest. Why choose between comfort and style if you can have it all? We want to give you the opportunity to define yourself also through what you wear. We will be by your side every day, for help you work at your best.

Your way.

ho.re.ca. & services

Gilet e grembiuli coordinati
Matching waistcoats and aprons

MIGUEL

Dettagli / Details

- Foderato
- 2 tasche
- 4 bottoni

- Lined
- 2 pockets
- 4 buttons

Taglie / Sizes

S ÷ XXXL Regular Fit

Art. 22P01E305

J004 Jeans blu / Blue jeans

Tessuto / Fabric

62% cotone 35% poliestere 3% elasthan
62% cotton 35% polyester 23% elastane
180 g / m²



CORA

Dettagli / Details

- Foderato
- 2 tasche
- 4 bottoni

- Lined
- 2 pockets
- 4 buttons

Taglie / Sizes

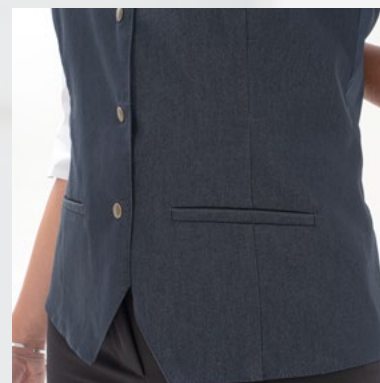
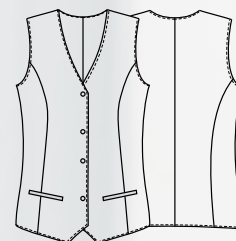
XS ÷ XXL Slim Fit

Art. 22P01E306

J004 Jeans Blu / Blue jeans

Tessuto / Fabric

62% cotone 35% poliestere 3% elasthan
62% cotton 35% polyester 23% elastane
180 g / m²





ALABAMA

Dettagli / Details

- 2 tasche
- 3 taschini portapenne
- Allacciatura collo regolabile

- 2 pockets
- 3 pen pockets
- Adjustable halter

Taglie / Sizes

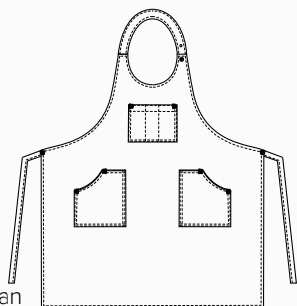
Taglia unica / One size

Art. 22P01H307

J004 Jeans blu / Blue jeans

Tessuto / Fabric

62% cotone 35% poliestere 3% elastan
62% cotton 35% polyester 3% elastane
180 g / m²



MISSOURI

Dettagli / Details

- 1 tasca

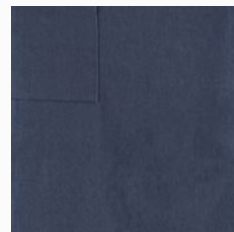
- 1 pocket

Taglie / Sizes

Taglia unica / One size

Misure / Dimensions

80x90 cm

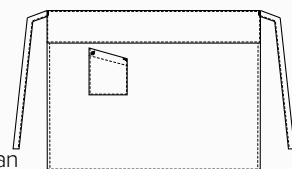


Art. 22P01H308

J004 Jeans blu / Blue jeans

Tessuto / Fabric

62% cotone 35% poliestere 3% elastan
62% cotton 35% polyester 3% elastane
180 g / m²





ho.re.ca. & services

Gilet e grembiuli coordinati
Matching waistcoats and aprons

CORA

Dettagli / Details

- 2 tasche
- 4 bottoni
- Fascette regolabili

- 2 pockets
- 4 buttons
- Adjustable buckles

Taglie / Sizes

XS ÷ XXL Slim Fit

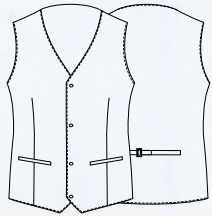
COMFORT

Art. 20P01E150

S322 Scozzese moro / Scottish brown

Tessuto / Fabric

68% poliestere 30% viscosa 2% elasthan
68% polyester 30% viscose 2% elastane
175 g / m²





COMFORT

ho.re.ca. & services

Gilet e grembiuli coordinati
Matching waistcoats and aprons

DOUGLAS

Dettagli / Details

- 1 tasca
- 4 taschino portapenne
- Allacciatura collo regolabile

- 1 pocket
- 4 pen pockets
- Adjustable halter

Taglie / Sizes

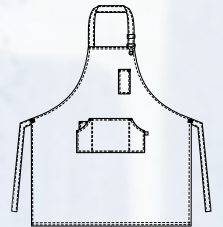
Taglia unica / One size

Art. 20P01H013

S322 Scozzese moro / Scottish brown

Tessuto / Fabric

68% poliestere 30% viscosa 2% elasthan
68% polyester 30% viscose 2% elastane
175 g / m²





Grembiule **LIONE**

Grembiule **SCOTLAND**

TROPEZ

Dettagli / Details

- 2 tasche
- 1 taschino portapenne
- Allacciatura collo regolabile
- Inserti in Alcantara
- Anello porta torcione

- 2 pockets
- 1 pen pocket
- Adjustable halter
- Alcantara inserts
- Cloth ring

Taglie / Sizes

Taglia unica / One size

Art. 20P01H149

073 Beige / Beige
322 Marrone / Brown
019 Grigio chiaro / Light grey

Tessuto / Fabric

100% poliestere
100% polyester
170 g / m²



Art. 20P01H149
019 Grigio / Grey

ho.re.ca. & services

Gilet e grembiuli coordinati
Matching waistcoats and aprons

RENO

Dettagli / Details

- 2 tasche - 1 taschino portapenne
- Allacciatura collo regolabile con bottoni

- 2 pockets - 1 pen pocket
- Adjustable halter with buttons

Taglie / Sizes

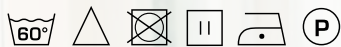
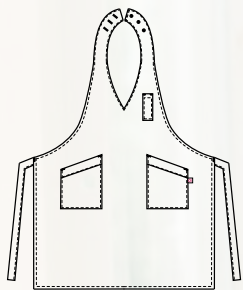
Taglia unica / One size

Art. 20P01H152

G000 Gessato nero
G000 Black pinstripe

Tessuto / Fabric

99% poliestere 1% viscosa
99% polyester 1% viscose
170 g / m²



RODANO

Dettagli / Details

- 1 tasca

- 1 pocket

Taglie / Sizes

Taglia unica / One size

Misure / Dimensions

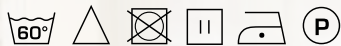
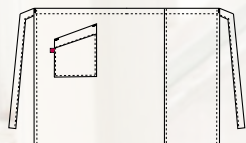
70x98 cm

Art. 20P01H154

G000 Gessato nero
G000 Black pinstripe

Tessuto / Fabric

99% poliestere 1% viscosa
99% polyester 1% viscose
170 g / m²



Art. 20P01H152
G000 Nero / Black

Art. 20P01H154
G000 Nero / Black

SENNA

Dettagli / Details

- 2 tasche
- Allacciatura collo regolabile con bottoni
- 2 pockets
- Adjustable halter with buttons

Taglie / Sizes

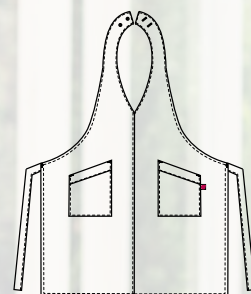
Taglia unica / One size

Art. 20P01H153

G119 Gessato grigio
G119 Grey pinstripe

Tessuto / Fabric

99% poliestere 1% viscosa
99% polyester 1% viscose
170 g / m²



RODANO

Dettagli / Details

- 1 tasca
- 1 pocket

Taglie / Sizes

Taglia unica / One size

Misure / Dimensions

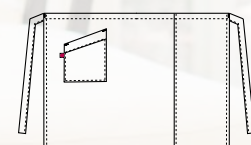
70x98 cm

Art. 20P01H154

G119 Gessato grigio
G119 Grey pinstripe

Tessuto / Fabric

99% poliestere 1% viscosa
99% polyester 1% viscose
170 g / m²



Art. 20P01H153
G119 Grigio / Gray

Art. 20P01H154
G119 Grigio / Gray

ho.re.ca. & services

Gilet e grembiuli coordinati
Matching waistcoats and aprons

GEORGIA

Dettagli / Details

- 2 tasche
- Allacciatura collo regolabile

- 2 pockets
- Adjustable halter

Taglie / Sizes

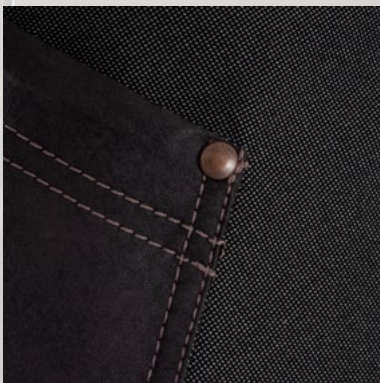
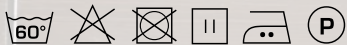
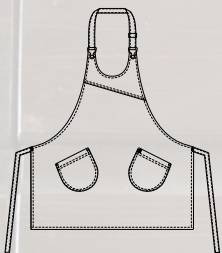
Taglia unica / One size

Art. 22P01H312

016 Tortora / Taupe

Tessuto / Fabric

100% poliestere
100% polyester
220 g / m²



MONTANA

Dettagli / Details

- 1 grande tasca
- 2 tasche
- Allacciatura collo regolabile
- 1 big pocket
- 2 pockets
- Adjustable halter

Taglie / Sizes

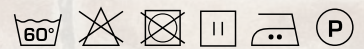
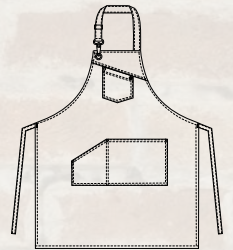
Taglia unica / One size

Art. 22P01H311

016 Tortora / Taupe

Tessuto / Fabric

100% poliestere
100% polyester
220 g / m²



ho.re.ca. & services

Gilet e grembiuli coordinati
Matching waistcoats and aprons

LUNA

Dettagli / Details

- 2 tasche
- Allacciatura collo regolabile con velcro

- 2 pockets
- Adjustable halter with velcro

Taglie / Sizes

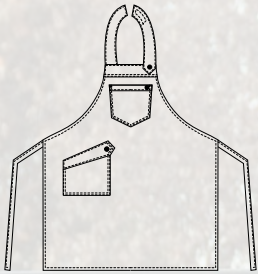
Taglia unica / One size

Art. 22P01H069

J222 Jeans marrone chiaro
J222 Light brown jeans

Tessuto / Fabric

100% cotone
100% cotton
321 g / m²



BROOKLYN

Dettagli / Details

- 1 grande tasca
- 1 taschino portapenne
- Allacciatura collo regolabile

- 1 big pocket
- 1 pen pocket
- Adjustable halter

Taglie / Sizes

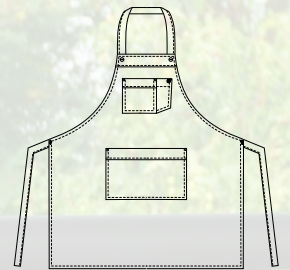
Taglia unica / One size

Art. 22P01H315

J222 Jeans marrone chiaro
J222 Light brown jeans

Tessuto / Fabric

100% cotone
100% cotton
321 g / m²



ho.re.ca. & services

Gilet e grembiuli coordinati
Matching waistcoats and aprons

TUCSON

Dettagli / Details

- 2 tasche
- 3 taschini portapenne
- Allacciatura collo regolabile
- Laccio collo removibile

- 2 pockets
- 3 pen pockets
- Adjustable halter
- Removable necklace

Taglie / Sizes

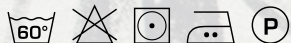
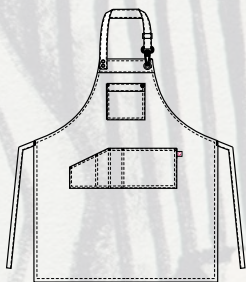
Taglia unica / One size

Art. 20P01H161

000 Nero / Black
102 Verde militare / Military green

Tessuto / Fabric

85% cotone 15% poliestere
85% cotton 15% polyester
290 g / m²



DAKOTA

Dettagli / Details

- 2 tasche
- 2 taschini portapenne
- Allacciatura collo regolabile
- Inserti in finta pelle

- 2 pockets
- Pen pocket
- Adjustable halter
- Fake leather inserts

Taglie / Sizes

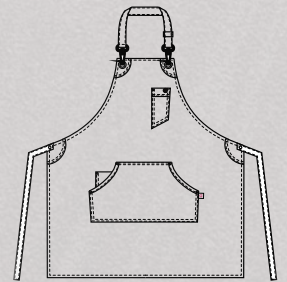
Taglia unica / One size

Art. 20P01H160

117 Ocra / Ochre
119 Grigio / Grey

Tessuto / Fabric

100% cotone
100% cotton
260 g / m²



ho.re.ca. & services

Gilet e grembiuli coordinati
Matching waistcoats and aprons

OREGON

Dettagli / Details

- 3 tasche
- Allacciatura collo regolabile
- Anello porta torcione

- 3 pockets
- Adjustable halter
- Cloth ring

Art. 22P01H067

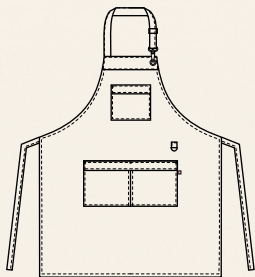
R102 Rigato verde / Striped green

Taglie / Sizes

Taglia unica / One size

Tessuto / Fabric

85% cotone 15% poliestere
85% cotton 15% polyester
275 g / m²



OREGON

Dettagli / Details

- 3 tasche
- Allacciatura collo regolabile
- Anello porta torcione
- 3 pockets
- Adjustable halter
- Cloth ring

Art. 19P01H067

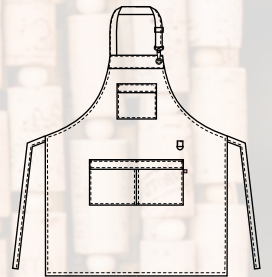
R006 Rigato bordeaux / Striped burgundy
R004 Rigato blu / Striped blue

Taglie / Sizes

Taglia unica / One size

Tessuto / Fabric

85% cotone 15% poliestere
85% cotton 15% polyester
275 g / m²



Giblor's
italian worklife specialist



PICASSO
Art. 19P01H081



GAUGUIN
Art. 19P01H079

MAGRITTE
Art. 19P01H080

ho.re.ca. & services

Gilet e grembiuli coordinati
Matching waistcoats and aprons

UTAH

Dettagli / Details

- 1 tasca
- 2 taschini portapenne
- Allacciatura collo regolabile

- 1 pocket
- 2 pen pockets
- Adjustable halter

Taglie / Sizes

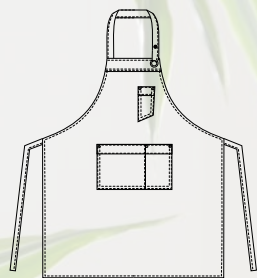
Taglia unica / One size

Art. 22P01H319

000 Nero / Black

Tessuto / Fabric

65% poliestere 35% cotone
65% polyester 35% cotton
310 g / m²



JERSEY

Dettagli / Details

- 1 tasca
- 3 taschini portapenne
- Allacciatura collo regolabile
- Porta torcione

- 1 pocket
- 3 pen pockets
- Adjustable halter
- Cloth holder

Taglie / Sizes

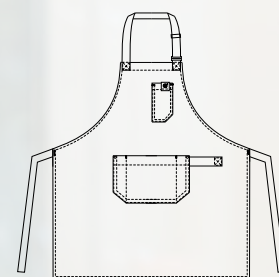
Taglia unica / One size

Art. 22P01H314

J000 Jeans nero / Black jeans

Tessuto / Fabric

75% cotone 23% poliestere 2% elasthan
75% cotton 23% polyester 2% elastane
210 g / m²



ho.re.ca. & services

Gilet e grembiuli coordinati
Matching waistcoats and aprons

JERSEY

Dettagli / Details

- 1 tasca
- 3 taschini portapenne
- Allacciatura collo regolabile
- Porta torcione

- 1 pocket
- 3 pens pockets
- Adjustable halter
- Cloth holder

Art. 22P01H313

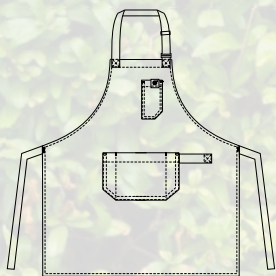
- 000 Nero / Black
- 019 Grigio chiaro / Light Grey
- 102 Verde militare / Military green
- 016 Tortora / Taupe
- 322 Marrone / Brown
- 006 Bordeaux / Burgundy
- 004 Blu / Blue

Taglie / Sizes

Taglia unica / One size

Tessuto / Fabric

65% poliestere 35% cotone
65% polyester 35% cotton
200 g / m²



Art. 22P01H313
004 Blu / Blue



Art. 22P01H313
000 Nero / Black



Art. 22P01H313
019 Grigio chiaro / Light Grey



Art. 22P01H313
102 Verde militare / Military green



Art. 22P01H313
016 Tortora / Taupe



Art. 22P01H313
322 Marrone / Brown



Art. 22P01H313
006 Bordeaux / Burgundy



Art. 22P01H313
004 Blu / Blue



ELETTRA
Art. 19P01H455
214 Petrolio / *Petroleum blue*

AMSTERDAM
Art. 19P01H440
214 Petrolio / *Petroleum blue*

ELETTRA

Dettagli / Details

- 1 tasca
- Allacciatura collo regolabile con velcro
- 1 pocket
- Adjustable halter with velcro

Taglie / Sizes

Taglia unica / One size

Art. 14P02H455
Art. 15P01H455
Art. 19P01H455

Tessuto / Fabric

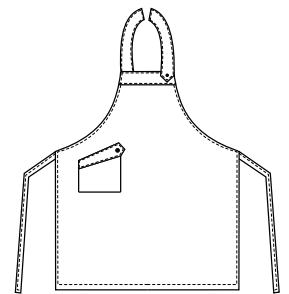
65% poliestere 35% cotone
65% polyester 35% cotton
200 g / m²



Art. 14P02H455
016 Tortora / Toupe

Art. 15P01H455
7014F Moka / Moka

Art. 15P01H455
000 Nero / Black



Art. 19P01H455
006 Bordeaux / Burgundy

Art. 19P01H455
033 Corallo / Coral

Art. 19P01H455
214 Petrolio / Petroleum blue

Art. 19P01H455
122 Bruciato / Burnt



AMSTERDAM

Dettagli / Details

- 2 tasche
- 2 pockets

Taglie / Sizes

Taglia unica / One size

Art. 14P01H440
Art. 15P01H440
Art. 1100
Art. 19P01H440

Tessuto / Fabric

65% poliestere 35% cotone
65% polyester 35% cotton
200 g / m²



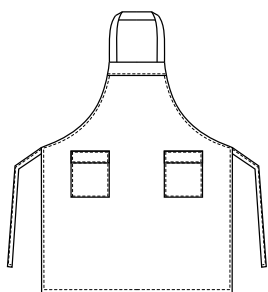
Art. 14P01H440
016 Tortora / Taupe



Art. 15P01H440
7014F Moka / Moka



Art. 1100
000 Nero / Black



Art. 1100
006 Bordeaux / Burgundy



Art. 19P01H440
033 Corallo / Coral



Art. 19P01H440
214 Petrolio / Petroleum blue



Art. 19P01H440
122 Bruciato / Burnt



Giblor's

italian worklife specialist



COLLEZIONE 2022

Scarica il catalogo completo su giblors.com



Giblor's

italian work*life* specialist



Viale dei Trasporti, 6/A - 6/B
41012 CARPI (MO) - Italy
Tel. +39.059.654.602 Fax + 39.059.654.634
www.giblors.com info@giblors.com